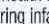


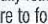
USE ONLY AS DIRECTED BY A PHYSICIAN
Directions for Preparation and Use

Your baby's health depends on carefully following these directions. Proper hygiene, handling and storage are important when preparing infant formula. Failure to follow these directions could result in severe harm. Ask your baby's doctor if you need to use cooled, boiled water for mixing and if you need to boil (sterilize) bottles, nipples and rings before use.



1 Wash your hands, surfaces and utensils

Pour prescribed amount of water into clean container



2 Add prescribed amount of Ketonex[®]-1 powder (and other ingredients if recommended)



3 Shake well for 10-15 seconds; if using a blender, mix no more than 5 seconds

Pour mixture into clean feeding bottles or container; cap

Once feeding begins, use within 1 hour or discard

Storage

Once mixed, store bottles or container in refrigerator and **feed to baby or child within 24 hours**. Store unopened or opened can at room temperature; avoid extreme temperatures. **Use opened can contents within 1 month.**

Warning


Powdered infant formulas are not sterile and should not be fed to premature infants or infants who might have immune problems unless directed and supervised by your baby's doctor. **Never use a microwave to warm formula.** Serious burns can result.

Mixing Guide

Approximate weights for unpacked, level, dry U.S. standard household measures for powder

1 Tbsp	8 g	1/2 Cup	60 g
1/4 Cup	30 g	1 Cup	120 g
1/3 Cup	40 g		

FOR MOST ACCURATE RESULTS, KETONEX-1 SHOULD BE WEIGHED ON A SCALE THAT READS IN GRAMS.



An FSSAI initiative
This is neither an infant milk substitute nor an infant food.
Manufactured by and Country of Origin: Abbott Laboratories, 901 North Centerville Road, Sturgis, MI 49091, USA.

For product related queries, contact Customer Care Officer at Marketed by address or call 1800 266 0448 (toll free) or email: webmaster.india@abbott.com

FOOD FOR SPECIAL MEDICAL PURPOSE




An FSSAI initiative
 This is neither an infant milk substitute
 nor an infant food.
 Manufactured by and Country of Origin:
 Abbott Laboratories, 901 North
 Centerville Road, Skaneateles, NY 49301, USA
 Imported and Marketed by:
 Abbott Nutrition India Pvt. Ltd., Regd.
 Office, 4, Corporate Park, Sion - Trombay
 Road, Mumbai - 400 071







fssai
 Lic. No. 100120220000149

For product related queries, contact
 Customer Care Officers at Marketed
 by address or call 1800 266 0448
 (Toll free) or
 email: webmasterindia@abbott.com


**FOOD FOR SPECIAL MEDICAL
 PURPOSE**
 For use under medical advice
 Batch Date: XX/XX/XXXX
 Expiry Date: XX/XX/XXXX
 Batch No.: XXXXXXXXXX
 Mfg. No.: XXXXX
 (Impulsive of all taxes)

Lot No. XXXX
 Cermody No. XXXXXXXXX

NET WT. 14.1 OZ (400 g) **Powder**

 Abbott Nutrition		51112-14.1-L-C0006-KX1-A		TURN OVERPRINT PREVIEW ON TO DISPLAY CORRECTLY <small>PLEASE CONTACT LABELING SPECIALIST FOR INSTRUCTIONS</small>	
PRESS STATIONS	 PROCESS BLACK	<input type="checkbox"/>	 VARNISH	<input checked="" type="checkbox"/>	PROOF:
	 PMS 3282 CV GREEN	<input type="checkbox"/>	<input type="checkbox"/>	<input type="checkbox"/>	 EPSON
	<input type="checkbox"/>	<input type="checkbox"/>	<input type="checkbox"/>	<input type="checkbox"/>	 KODAK
	<input type="checkbox"/>	<input type="checkbox"/>	<input type="checkbox"/>	<input type="checkbox"/>	APPROVED* DISAPPROVED
PRINTER: CENVEO				CAD: PK100987 REV D PREV. COMMODITY: 40430	
				GS*: GL0370 <small>*Generic Specification</small>	

*Approved proof is accurate for copy, size, upc, and process builds.
Match spot color(s) to approved ink drawdown(s) if applicable.



Ensuring visual excellence.

Prepress/Assembly

Job Description: Ketonex-2 14.1oz #C0014

Job Number: 13.5527	Customer: Abbott Nutrition
File Name: A5527DC0014	Vendor: XXXXXX
Final Artwork Size: 12.8125" x 4.375"	Printer: Cenvéo Toledo
Operator: MO	Last Modified: 9/21/13 6:07 AM

VERSION 1

Workflow: EFL_Abbott_SWOP_Offset

Black PANTONE 3282 C Varnish Die

Stevenson Color, Inc. | 535 Wilmer Avenue Cincinnati, Ohio 45226 | Telephone: 513.321.7500 Fax: 513.321.7502 | stevensoncolor.com

Our Stevenson Quality Assurance Team has thoroughly reviewed this file. Upon receipt, please check this file carefully. Our client and its suppliers are responsible for all content, color, legal and regulatory text and product information. Stevenson will, at our cost, replace our product if the work is found to be incorrect at this stage. Should an error be found subsequent to client/supplier approval, Stevenson shall be responsible only for the replacement of the artwork containing the error, and in addition, shall not be held liable for any consequential changes, charges or losses incurred as a result of any error.

100mm LINE

1/8

PRINT LIMIT

1/8

12 3/8 VARNISHED AREA

Cenvéo

4 7/8

1/8 PRINT LIMIT

4 3/8

12 13/16

7/16 GLUE FLAP

3/16 PRINT LIMIT

NUTRIENTS		PER 100 g POWDER	PER 100 g POWDER		
PROTEIN EQUIVALENT, g	30.0	LINOLENIC ACID, mg	225
FAT, g	14.0	L-CARNITINE, mg	200
CARBOHYDRATE, g	35.0	CALORIES	410
LINOLEIC ACID, mg	2200			

VITAMINS		PER 100 g POWDER	PER 100 g POWDER		
VITAMIN A, IU (mcg RE)	2200 (660)	NIACIN, mg (mg NE)	16 (21.7)
VITAMIN D, IU (mcg)	300 (7.5)	FOLIC ACID (FOLACIN), mcg	450
VITAMIN E, IU (mg α-TE)	18 (12.1)	PANTOTHENIC ACID, mg	8.0
VITAMIN K, mcg	60	BIOTIN, mcg	100
THIAMIN (vit. B ₁), mg	3.3	VITAMIN C	
RIBOFLAVIN (vit. B ₂), mg	1.8	ASCORBIC ACID, mg	60
VITAMIN B ₆ , mg	1.3	CHOLINE, mg	100
VITAMIN B ₁₂ , mcg	5.0	INOSITOL, mg	70

MINERALS		PER 100 g POWDER	PER 100 g POWDER		
CALCIUM, mg	880	IODINE, mcg	100
PHOSPHORUS, mg	760	SELENIUM, mcg	35
MAGNESIUM, mg	225	CHROMIUM, mcg	27
IRON, mg	13	MOLYBDENUM, mcg	30
ZINC, mg	13	SODIUM, mg (mEq)	880 (38.3)
MANGANESE, mg	0.8	POTASSIUM, mg (mEq)	1370 (35.0)
COPPER, mg	1.0	CHLORIDE, mg (mEq)	940 (26.5)

INGREDIENTS: CORN SYRUP SOLIDS, L-ALANINE, HIGH OLEIC SAFFLOWER OIL, COCONUT OIL, SODIUM CITRATE, SOY OIL, L-PROLINE, L-LYSINE ACETATE, L-ARGININE, CALCIUM PHOSPHATE, L-GLUTAMINE, GLYCINE, MAGNESIUM PHOSPHATE, POTASSIUM CHLORIDE, L-TYROSINE, LESS THAN 2% OF: L-SERINE, L-PHENYLALANINE, L-ASPARAGINE, L-THREONINE, SILICON DIOXIDE, DATEM, L-HISTIDINE, POTASSIUM CITRATE, POTASSIUM PHOSPHATE, L-METHIONINE, L-GLUTAMIC ACID, L-CYSTINE DIHYDROCHLORIDE, L-TRYPTOPHAN, L-ASPARTIC ACID, CALCIUM CARBONATE, ASCORBIC ACID, L-CARNITINE, TAURINE, CHOLINE CHLORIDE, m-INOSITOL, FERROUS SULFATE, ZINC SULFATE, NIACINAMIDE, dl-ALPHA-TOCOPHERYL ACETATE, CALCIUM PANTOTHENATE, ASCORBYL PALMITATE, MIXED TOCOPHEROLS, COPPER SULFATE, MANGANESE SULFATE, THIAMINE CHLORIDE HYDROCHLORIDE, RIBOFLAVIN, VITAMIN A PALMITATE, PYRIDOXINE HYDROCHLORIDE, FOLIC ACID, CHROMIUM CHLORIDE, POTASSIUM IODIDE, BETA-CAROTENE, BIOTIN, SODIUM SELENATE, PHYLOQUINONE, SODIUM MOLYBDATE, VITAMIN D₂ AND CYANOCOBALAMIN.

Abbott Nutrition, Abbott Laboratories
Columbus, Ohio 43219-3034 USA

USE ONLY AS DIRECTED BY A PHYSICIAN
Directions for Preparation and Use

Depending on specific needs of each individual, preparation will vary as prescribed by physician. Follow physician's instructions carefully.

- 1 Wash your hands, surfaces and utensils. Pour prescribed amount of water into clean container.
- 2 Add prescribed amount of Ketonex®-2 powder (and other ingredients if recommended).
- 3 Shake well for 10-15 seconds; if using a blender, mix no more than 5 seconds. Pour mixture into clean feeding cup or container; cap.

Storage Once mixed, store container in refrigerator and use within 24 hours. Store unopened or opened can at room temperature; avoid extreme temperatures. Use opened can contents within 1 month.

Warning This medical food should not be heated or used in cooking.

USE BY DATE ON BOTTOM OF CAN

Helpful Hints

- Add sweetened drink crystals to enhance flavor
- Mix Ketonex-2 with fruit to make a smoothie
- Add chocolate or strawberry syrup
- Freeze flavored mixture in slushies

Mixing Guide

Approximate weights for unpacked, level, dry U.S. standard household measures for powder

1 Tbsp	8 g	1/2 Cup	60 g
1/4 Cup	30 g	1 Cup	120 g
1/3 Cup	40 g			

FOR MOST ACCURATE RESULTS, KETONEX-2 SHOULD BE WEIGHED ON A SCALE THAT READS IN GRAMS.

Net Weight: 14.1 OZ (400 g)

For product related queries, contact Customer Care Officer at Marketed by address or call 1800 266 0448 (toll free) or email: webmasterindia@abbott.com

Manufactured by and Country of Origin: Abbott Laboratories, 901 North Centerline Road, Sturgis, MI 49991, USA

Imported and Marketed by: Abbott Healthcare Pvt. Ltd., Regd. Office, 4, Corporate Park, Sion - Trombay Road, Mumbai - 400 071

Food for Special Medical Purpose (To be taken under medical advice)
Mfg. Date: XX.XXXX.XXXX
Expiry Date: XX.XXXX.XXXX
Batch No.: XXXXXXXX
MPP #: XXXXX-XXXX-XXXX (Inclusive of all taxes)

AN FSSAI initiative
This is neither an infant milk substitute nor an infant food.

HALAL

Abbott

Ketonex®-2

Amino Acid-Modified Medical Food

ISOLEUCINE-, LEUCINE- AND VALINE-FREE

For nutrition support of children and adults with maple syrup urine disease (MSUD)

PRECAUTIONS:
Not intended as a sole source of nutrition. Give only to children and adults with proven maple syrup urine disease (MSUD) who are under medical supervision. Must be supplemented with protein and fluid in prescribed amounts to completely meet isoleucine, leucine, valine and water requirements.

NOT FOR IV USE
NOT FOR INFANTS UNDER 1 YEAR OF AGE

NET WT. 14.1 OZ (400 g)

Powder

Abbott Nutrition

51114-14.1-L-C0014-KX2-S

TURN OVERPRINT PREVIEW ON TO DISPLAY CORRECTLY

PLEASE CONTACT LABELING SPECIALIST FOR INSTRUCTIONS

PROOF: ☒ EPSON ☒ APPROVED* ☐ KODAK ☐ DISAPPROVED

PRINTER: CENVEO

CAD: PK100987 REV D GS: GL0370

PREV. COMMODITY: 40432 *Generic Specification

SIGNATURE

PRESS STATIONS

<input checked="" type="checkbox"/> PROCESS BLACK	<input type="checkbox"/>	<input checked="" type="checkbox"/> VARNISH
<input checked="" type="checkbox"/> PMS 3282 CV GREEN	<input type="checkbox"/>	<input type="checkbox"/>
<input type="checkbox"/>	<input type="checkbox"/>	<input type="checkbox"/>
<input type="checkbox"/>	<input type="checkbox"/>	<input type="checkbox"/>

*Approved proof is accurate for copy, size, upc, and process builds. Match spot color(s) to approved ink drawdown(s) if applicable.

12 3/8
VARNISHED AREA

4 7/8

1/8 PRINT LIMIT

1/8

PRINT LIMIT

1/8

3/16 PRINT LIMIT

7/16 GLUE FLAP

4 3/8

12 13/16

NUTRIENTS		PER 100 g POWDER	PER 100 g POWDER
PROTEIN EQUIVALENT, g	15.0	UNOLENIC ACID, mg	350
FAT, g	21.7	L-CARNITINE, mg	900
CARBOHYDRATE, g	33.0	CALORIES	490
UNOLENIC ACID, mg	3500		

VITAMINS	
VITAMIN A, IU (mcg RE)	1400 (420)
VITAMIN D, IU (mcg)	300 (7.5)
VITAMIN E, IU (mg α-TE)	15 (10.1)
VITAMIN K, mcg	50
THIAMIN (vit. B ₁), mcg	1900
RIBOFLAVIN (vit. B ₂), mcg	900
VITAMIN B ₆ , mcg	750
VITAMIN B ₁₂ , mcg	4.9
NIACIN, mcg (mg NE)	10000 (10.0)
FOLIC ACID (FOLACIN), mcg	230
PANTOTHENIC ACID, mcg	6900
BIOTIN, mcg	65
VITAMIN C (ASCORBIC ACID), mg	50
CHOLINE, mg	80
INOSITOL, mg	40

MINERALS	
CALCIUM, mg	575
PHOSPHORUS, mg	400
MAGNESIUM, mg	50
IRON, mg	9
ZINC, mg	8
MANGANESE, mcg	500
COPPER, mcg	1100
IODINE, mcg	65
SELENIUM, mcg	20
CHROMIUM, mg	11
MOLYBDENUM, mcg	12
SODIUM, mg (mEq)	190 (8.3)
POTASSIUM, mg (mEq)	675 (17.3)
CHLORIDE, mg (mEq)	325 (8.2)

INGREDIENTS: CORN SYRUP SOLIDS, HIGH OLEIC SAFFLOWER OIL, COCONUT OIL, SOY OIL, L-GLUTAMIC ACID, LESS THAN 2% OF: L-LEUCINE, L-PROLINE, L-ASPARTIC ACID, L-ARGININE, CALCIUM PHOSPHATE, L-VALINE, D-ALANINE, L-ISOLEUCINE, GLYCINE, POTASSIUM PHOSPHATE, L-CARNITINE, L-TYROSINE, L-PHENYLALANINE, L-SERINE, L-THREONINE, SODIUM CITRATE, POTASSIUM CITRATE, MAGNESIUM CHLORIDE, L-HISTIDINE, L-METHIONINE, CALCIUM CARBONATE, L-CYSTINE DIHYDROCHLORIDE, ASCORBIC ACID, CHOLINE CHLORIDE, TAURINE, m-INOSITOL, FERROUS SULFATE, ZINC SULFATE, ASCORBYL PALMITATE, dl-ALPHA-TOCOPHERYL ACETATE, NIACINAMIDE, MIXED TOCOPHEROLS, CALCIUM PANTOTHENATE, SALT, CUPRIC SULFATE, THIAMINE CHLORIDE HYDROCHLORIDE, MANGANESE SULFATE, VITAMIN A PALMITATE, RIBOFLAVIN, PYRIDOXINE HYDROCHLORIDE, FOLIC ACID, BETA-CAROTENE, POTASSIUM IODIDE, BIOTIN, PHYLLQUINONE, SODIUM SELENATE, CHROMIUM CHLORIDE, SODIUM MOLYBDATE, VITAMIN D₃ AND CYANOCOBALAMIN.

Abbott Nutrition, Abbott Laboratories
Columbus, Ohio 43219-3034 USA

USE ONLY AS DIRECTED BY A PHYSICIAN
Directions for Preparation and Use

Your baby's health depends on carefully following these directions. Proper hygiene, handling and storage are important when preparing infant formula. Failure to follow these directions could result in severe harm. Ask your baby's doctor if you need to use cooled, boiled water for mixing and if you need to boil (sterilize) bottles, nipples and rings before use.

1 Wash your hands, surfaces and utensils
Pour prescribed amount of water into clean container

2 Add prescribed amount of Glutarex®-1 powder (and other ingredients if recommended)

3 Shake well for 10-15 seconds; if using a blender, mix no more than 5 seconds
Pour mixture into clean feeding bottles or container; cap

Once feeding begins, use within 1 hour or discard

Storage Once mixed, store bottles or container in refrigerator and feed to baby or child within 24 hours. Store unopened or opened can at room temperature; avoid extreme temperatures. Use opened can contents within 1 month.

Warning Powdered infant formulas are not sterile and should not be fed to premature infants or infants who might have immune problems unless directed and supervised by your baby's doctor. Never use a microwave to warm formula. Serious burns can result.

USE BY DATE ON BOTTOM OF CAN

To meet the nutrient needs of the infant or child, infant formula, breast milk or additional food choices must be given to supply protein, lysine and tryptophan requirements. These may be added to the Glutarex-1 mixture or prepared separately as instructed. Depending on the specific needs of each patient, preparation will vary as prescribed by physician.

Mixing Guide

Approximate weights for unpacked, level, dry U.S. standard household measures for powder

1 Tbsp	8 g	1/2 Cup	60 g
1/4 Cup	30 g	1 Cup	120 g
1/3 Cup	40 g		

FOR MOST ACCURATE RESULTS, GLUTAREX-1 SHOULD BE WEIGHED ON A SCALE THAT READS IN GRAMS.

An FSSAI initiative

This is neither an infant milk substitute nor an infant food.

Manufactured by and Country of Origin:
Abbott Laboratories, 901 North Centerline Road, Sturgis, MI 49091, USA
Imported and Marketed by:
Abbott Healthcare Pvt. Ltd., Regd. Office, 4, Corporate Park, Sion - Trombay Road, Mumbai - 400 071

Lic. No. 100120220000149

For product related queries, contact Customer Care Officer at Mumbai by address or call 1800 266 0448 (Toll free) or email: webmaster@india.abbott.com

FOOD FOR SPECIAL MEDICAL PURPOSE
(To be taken under medical advice)
Mfg. Date: XX.XXX.XXXX
Exp. Date: XX.XXX.XXXX
Batch No.: XXXXXXXXXX
MPP #: XXXXX
(Inclusive of all taxes)

Lic. No. XXXX
Commodity No. XXXXXXXXX

Abbott

Glutarex®-1

Amino Acid-Modified Infant Formula With Iron

LYSINE- AND TRYPTOPHAN-FREE

For nutrition support of infants and toddlers with glutaric aciduria type I

PRECAUTIONS:
Not intended as a sole source of nutrition. Give only to infants and toddlers with proven glutaric aciduria type I who are under medical supervision. Must be supplemented with protein and fluid in prescribed amounts to completely meet lysine, tryptophan and water requirements.

NOT FOR IV USE

NET WT. 14.1 OZ (400 g)

Powder

Abbott Nutrition

51140-14.1-L-C0009-GX1-A

PROCESS BLACK

PMS 192 CV RED

☐

☐

☐

☐

☐

☐

☒ VARNISH

☐

☐

☐

☐

☐

PROOF: ☒ EPSON ☐ KODAK

☐ APPROVED* ☐ DISAPPROVED

PRINTER: CENVEO

CAD: PK100987 REV D
PREV. COMMODITY: 40418

GS*: GL0370
*Generic Specification

SIGNATURE

*Approved proof is accurate for copy, size, upc, and process builds. Match spot color(s) to approved ink drawdown(s) if applicable.

Ensuring visual excellence.

Prepress/Assembly

Job Description: **Glutarex-2 14.1oz #C0011**

Job Number: **13.5475** Customer: **Abbott Nutrition**

File Name: **A5475DC0011** Vendor: **XXXXXX**

Final Artwork Size: **12.8125" x 4.375"** Printer: **Cenveo Toledo**

Operator: **MO** Last Modified: **9/21/13 6:16 AM**

Our Stevenson Quality Assurance Team has thoroughly reviewed this file. Upon receipt, please check this file carefully. Our client and its suppliers are responsible for all content, color, legal and regulatory text and product information. Stevenson will, at our cost, replace our product if the work is found to be incorrect at this stage. Should an error be found subsequent to client/supplier approval, Stevenson shall be responsible only for the replacement of the artwork containing the error, and in addition, shall not be held liable for any consequential changes, charges or losses incurred as a result of any error.

VERSION **1**

Workflow: **EFL_Abbott_SWOP_Offset**

Black PANTONE 192 C Varnish Die

1% 25% 50% 75% 100% 2% 50% 100% 2% 50% 100% 2% 50% 100%

Stevenson Color, Inc. | 535 Wilmer Avenue Cincinnati, Ohio 45226 | Telephone: 513.321.7500 Fax: 513.321.7502 | stevensoncolor.com

100mm LINE

1/8

PRINT LIMIT

1/8

100mm LINE

12 3/8 VARNISHED AREA

4 7/8

1/8 PRINT LIMIT

4 3/8

12 13/16

3/16 PRINT LIMIT

7/16 GLUE FLAP

NUTRIENTS		PER 100 g POWDER	PER 100 g POWDER
PROTEIN EQUIVALENT, g	30.0	LINOLENIC ACID, mg	225
FAT, g	13.0	L-CARNITINE, mg	1800
CARBOHYDRATE, g	35.0	CALORIES	410
LINOLEIC ACID, mg	2200		

VITAMINS		PER 100 g POWDER	PER 100 g POWDER
VITAMIN A, IU (mcg RE)	2200 (660)	NIACIN, mg (mg NE)	16 (16)
VITAMIN D, IU (mcg)	300 (7.5)	FOLIC ACID (FOLACIN), mcg	430
VITAMIN E, IU (mg α-TE)	18 (12.1)	PANTOTHENIC ACID, mg	8.0
VITAMIN K, mcg	60	BIOTIN, mcg	100
THIAMIN (Vit. B ₁), mg	3.3	VITAMIN C (ASCORBIC ACID), mg	60
RIBOFLAVIN (Vit. B ₂), mg	1.8	CHOLINE, mg	100
VITAMIN B ₆ , mg	1.3	INOSITOL, mg	70
VITAMIN B ₁₂ , mcg	5.0		

MINERALS		PER 100 g POWDER	PER 100 g POWDER
CALCIUM, mg	880	IODINE, mcg	100
PHOSPHORUS, mg	760	SELENIUM, mcg	35
MAGNESIUM, mg	225	CHROMIUM, mcg	27
IRON, mg	13	MOLYBDENUM, mcg	30
ZINC, mg	13	SODIUM, mg (mEq)	880 (38.3)
MANGANESE, mg	0.8	POTASSIUM, mg (mEq)	1370 (55.0)
COPPER, mg	1.0	CHLORIDE, mg (mEq)	940 (26.5)

INGREDIENTS: CORN SYRUP SOLIDS, L-GLUTAMIC ACID, HIGH OLEIC SAFFLOWER OIL, COCONUT OIL, SODIUM CITRATE, SOY OIL, L-LEUCINE, L-PROLINE, L-ASPARTIC ACID, L-ARGININE, L-VALINE, L-ALANINE, CALCIUM PHOSPHATE, L-ISOLEUCINE, GLYCINE, L-CARNITINE, L-TYROSINE, LESS THAN 2% OF: L-PHENYLALANINE, MAGNESIUM PHOSPHATE, POTASSIUM CHLORIDE, L-SERINE, L-THREONINE, SILICON DIOXIDE, L-HISTIDINE, DATEM, POTASSIUM CITRATE, POTASSIUM PHOSPHATE, L-METHIONINE, L-CYSTINE DIHYDROCHLORIDE, CALCIUM CARBONATE, ASCORBIC ACID, TAURINE, CHOLINE CHLORIDE, m-INOSITOL, FERROUS SULFATE, ZINC SULFATE, NIACINAMIDE, d-ALPHA-TOCOPHERYL ACETATE, CALCIUM PANTOTHENATE, ASCORBYL PALMITATE, MIXED TOCOPHEROLS, CUPRIC SULFATE, MANGANESE SULFATE, THIAMINE CHLORIDE HYDROCHLORIDE, RIBOFLAVIN, VITAMIN A PALMITATE, PYRIDOXINE HYDROCHLORIDE, FOLIC ACID, CHROMIUM CHLORIDE, POTASSIUM IODIDE, BETA-CAROTENE, BIOTIN, SODIUM SELENATE, PHYLOQUINONE, SODIUM MOLYBDATE, VITAMIN D₃ AND CYANOCOBALAMIN.

Abbott Nutrition, Abbott Laboratories
Columbus, Ohio 43219-3034 USA

USE ONLY AS DIRECTED BY A PHYSICIAN
Directions for Preparation and Use

Depending on specific needs of each individual, preparation will vary as prescribed by physician. Follow physician's instructions carefully.

1 Wash your hands, surfaces and utensils
Pour prescribed amount of water into clean container

2 Add prescribed amount of Glutarex®-2 powder (and other ingredients if recommended)

3 Shake well for 10-15 seconds; if using a blender, mix no more than 5 seconds
Pour mixture into clean feeding cup or container; cap

Serve chilled. Once feeding begins, use within 1 hour or discard.

Storage Once mixed, store container in refrigerator and use within 24 hours. Store unopened or opened can at room temperature; avoid extreme temperatures. Use opened can contents within 1 month.

Warning This medical food should not be heated or used in cooking.

Helpful Hints

- Add sweetened drink crystals to enhance flavor
- Mix Glutarex-2 with fruit to make a smoothie
- Add chocolate or strawberry syrup
- Freeze flavored mixture in slushies

Mixing Guide

Approximate weights for unpacked, level, dry U.S. standard household measures for powder

1 Tbsp	8 g	1/2 Cup	60 g
1/4 Cup	30 g	1 Cup	120 g
1/3 Cup	40 g		

FOR MOST ACCURATE RESULTS, GLUTAREX-2 SHOULD BE WEIGHED ON A SCALE THAT READS IN GRAMS.

For product related queries, contact Customer Care Officer at Marketed by address or call 1800 266 0448 (Toll free) or email: webmaster@india@abbott.com

FOOD FOR SPECIAL MEDICAL PURPOSE
(To be taken under medical advice)
Mfg. Date: XX/XX/XXXX
Batch No.: XXXXXXXX
MIP #: XXXXX-
(Inclusive of all taxes)

Net Wt. 14.1 OZ (400 g)

Abbott

Glutarex®-2

Amino Acid-Modified Medical Food

LYSINE- AND TRYPTOPHAN-FREE

For nutrition support of children and adults with glutaric aciduria type I

PRECAUTIONS:
Not intended as a sole source of nutrition. Give only to children and adults with proven glutaric aciduria type I who are under medical supervision. Must be supplemented with protein and fluid in prescribed amounts to completely meet lysine, tryptophan and water requirements.

NOT FOR IV USE
NOT FOR INFANTS UNDER 1 YEAR OF AGE

NET WT. 14.1 OZ (400 g)

Powder

51142-14.1-L-C0011-GX2-S

PROCESS BLACK

PMS 192 CV RED

VARNISH

PROOF:

EPSON

KODAK

APPROVED*

DISAPPROVED

PRINTER: CENVEO

CAD: PK100987 REV D

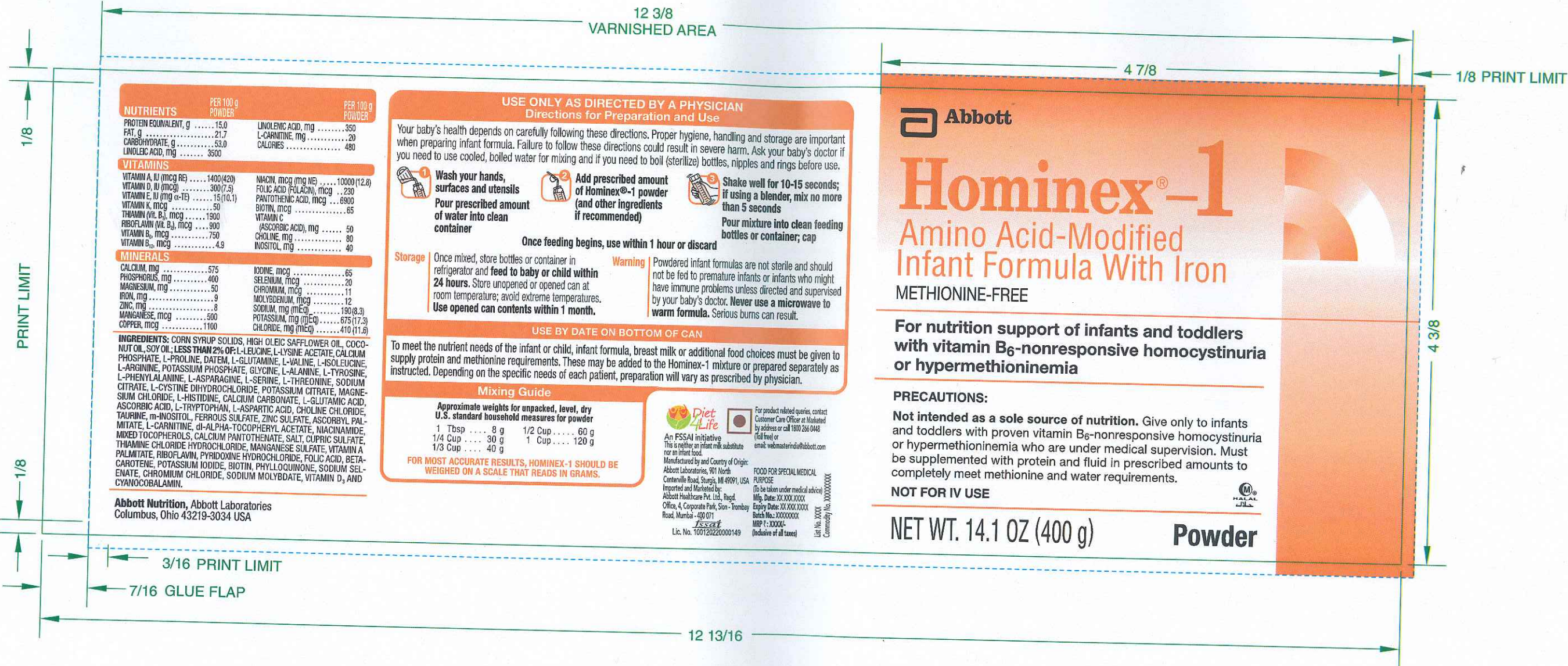
PREV. COMMODITY: 40420

GS*: GL0370

*Generic Specification

SIGNATURE

*Approved proof is accurate for copy, size, upc, and process builds. Match spot color(s) to approved ink drawdown(s) if applicable.



NUTRIENTS		PER 100 g POWDER	PER 100 g POWDER		
PROTEIN EQUIVALENT, g	15.0	UNOLENIC ACID, mg	350
FAT, g	21.7	L-CARNITINE, mg	20
CARBOHYDRATE, g	53.0	CALORIES	480
UNOLENIC ACID, mg	3500			
VITAMINS					
VITAMIN A, IU (mcg RE)	1400 (420)	NIACIN, mcg (mg NE)	10000 (12.8)
VITAMIN D, IU (mcg)	300 (7.5)	FOLIC ACID (FOLACIN), mcg	230
VITAMIN E, IU (mg α-TE)	15 (10.1)	PANTOTHENIC ACID, mcg	8900
VITAMIN K, mcg	50	BIOTIN, mcg	65
THIAMIN (VIT. B ₁), mcg	1900	VITAMIN C	
RIBOFLAVIN (VIT. B ₂), mcg	900	ASCORBIC ACID, mg	50
VITAMIN B ₆ , mcg	750	CHOLINE, mg	80
VITAMIN B ₁₂ , mcg	4.9	INOSITOL, mg	40
MINERALS					
CALCIUM, mg	575	IODINE, mcg	65
PHOSPHORUS, mg	400	SELENIUM, mcg	20
MAGNESIUM, mg	50	CHROMIUM, mcg	11
IRON, mg	9	MOLYBDENUM, mcg	12
ZINC, mg	8	SODIUM, mg (mEq)	190 (8.3)
MANGANESE, mcg	500	POTASSIUM, mg (mEq)	675 (17.3)
COPPER, mcg	1100	CHLORIDE, mg (mEq)	410 (11.6)

INGREDIENTS: CORN SYRUP SOLIDS, HIGH OLEIC SAFFLOWER OIL, COCONUT OIL, SOY OIL, LESS THAN 2% OF: L-LEUCINE, L-LYSINE ACETATE, CALCIUM PHOSPHATE, L-PROLINE, D-ALANINE, L-GLUTAMINE, L-VALINE, L-ISOLEUCINE, L-ARGININE, POTASSIUM PHOSPHATE, GLYCINE, L-ALANINE, L-TYROSINE, L-PHENYLALANINE, L-ASPARAGINE, L-SERINE, L-THREONINE, SODIUM CITRATE, L-CYSTINE DIHYDROCHLORIDE, POTASSIUM CITRATE, MAGNESIUM CHLORIDE, L-HISTIDINE, CALCIUM CARBONATE, L-GLUTAMIC ACID, ASCORBIC ACID, L-TRYPTOPHAN, L-ASPARTIC ACID, CHOLINE CHLORIDE, THIAMINE, m-INOSITOL, FERROUS SULFATE, ZINC SULFATE, ASCORBYL PALMITATE, L-CARNITINE, di-ALPHA-TOCOPHERYL ACETATE, NIACINAMIDE, MIXED TOCOPHEROLS, CALCIUM PANTOTHENATE, SALT, COPPER SULFATE, THIAMINE CHLORIDE HYDROCHLORIDE, MANGANESE SULFATE, VITAMIN A PALMITATE, RIBOFLAVIN, PYRIDOXINE HYDROCHLORIDE, FOLIC ACID, BETA-CAROTENE, POTASSIUM IODIDE, BIOTIN, PHYLLOQUINONE, SODIUM Selenate, CHROMIUM CHLORIDE, SODIUM MOLYBDATE, VITAMIN D₃ AND CYANOCOBALAMIN.

Abbott Nutrition, Abbott Laboratories
Columbus, Ohio 43219-3034 USA

USE ONLY AS DIRECTED BY A PHYSICIAN
Directions for Preparation and Use

Your baby's health depends on carefully following these directions. Proper hygiene, handling and storage are important when preparing infant formula. Failure to follow these directions could result in severe harm. Ask your baby's doctor if you need to use cooled, boiled water for mixing and if you need to boil (sterilize) bottles, nipples and rings before use.

1 Wash your hands, surfaces and utensils
Pour prescribed amount of water into clean container

2 Add prescribed amount of Hominex®-1 powder (and other ingredients if recommended)

3 Shake well for 10-15 seconds; if using a blender, mix no more than 5 seconds
Pour mixture into clean feeding bottles or container; cap

Once feeding begins, use within 1 hour or discard

Storage Once mixed, store bottles or container in refrigerator and feed to baby or child within 24 hours. Store unopened or opened can at room temperature; avoid extreme temperatures. Use opened can contents within 1 month.

Warning Powdered infant formulas are not sterile and should not be fed to premature infants or infants who might have immune problems unless directed and supervised by your baby's doctor. Never use a microwave to warm formula. Serious burns can result.

USE BY DATE ON BOTTOM OF CAN

To meet the nutrient needs of the infant or child, infant formula, breast milk or additional food choices must be given to supply protein and methionine requirements. These may be added to the Hominex-1 mixture or prepared separately as instructed. Depending on the specific needs of each patient, preparation will vary as prescribed by physician.

Mixing Guide

Approximate weights for unpacked, level, dry U.S. standard household measures for powder

1 Tbsp	8 g	1/2 Cup	60 g
1/4 Cup	30 g	1 Cup	120 g
1/3 Cup	40 g			

FOR MOST ACCURATE RESULTS, HOMINEX-1 SHOULD BE WEIGHED ON A SCALE THAT READS IN GRAMS.

Diet Life
An FSSAI initiative
This is neither an infant milk substitute nor an infant food.

Manufactured by and Country of Origin:
Abbott Laboratories, 901 North Centerville Road, Sturgis, MI 49091, USA
Imported and Marketed by:
Abbott Healthcare Pvt. Ltd., Regd. Office, 4, Corporate Park, Sion - Trombay Road, Mumbai - 400 071
Lic. No. 10012022000149

For product related queries, contact Customer Care Officer at Marketed by address or call 1800 266 0448 (toll free) or email: webmasterindia@abbott.com

FOOD FOR SPECIAL MEDICAL PURPOSE
(To be taken under medical advice)
Mfg. Date: XX/XX/XXXX
Exp. Date: XX/XX/XXXX
Batch No.: XXXXXXXX
MIP: XXXXX
(Inclusive of all taxes)

Lot No. XXXX
Commodity No. XXXXXXXXX

Hominex®-1

Amino Acid-Modified Infant Formula With Iron

METHIONINE-FREE

For nutrition support of infants and toddlers with vitamin B₆-nonresponsive homocystinuria or hypermethioninemia

PRECAUTIONS:
Not intended as a sole source of nutrition. Give only to infants and toddlers with proven vitamin B₆-nonresponsive homocystinuria or hypermethioninemia who are under medical supervision. Must be supplemented with protein and fluid in prescribed amounts to completely meet methionine and water requirements.

NOT FOR IV USE

NET WT. 14.1 OZ (400 g) Powder

51116-14.1-L-C0008-HM1-A

TURN OVERPRINT PREVIEW ON TO DISPLAY CORRECTLY
PLEASE CONTACT LABELING SPECIALIST FOR INSTRUCTIONS

PROCESS
BLACK

PMS 1655 CV
ORANGE

☒ VARNISH

☐

☐

☐

PROOF:

☒ EPSON ☐ APPROVED*

☐ KODAK ☐ DISAPPROVED

PRINTER: CENVEO

CAD: PK100987 REV D **GS:** GL0370

PREV. COMMODITY: 40422 *Generic Specification

SIGNATURE

*Approved proof is accurate for copy, size, upc, and process builds. Match spot color(s) to approved ink drawdown(s) if applicable.

stevenson

Prepress/Assembly

Job Description: Hominex-2 14.1oz #C0012

Job Number: 13.5475

Customer: Abbott Nutrition

File Name: A5475DC0012

Vendor: XXXXXX

Final Artwork Size: 12.8125" x 4.375"

Printer: Cenvéo Toledo

Operator: MO

Last Modified: 9/21/13 6:16 AM

Ensuring visual excellence.

VERSION 1

Workflow: EFL_Abbott_SWOP_Offset

Black

PANTONE 1655 C

Varnish

Die

Stevenson Color, Inc. | 535 Wilmer Avenue Cincinnati, Ohio 45226 | Telephone: 513.321.7500 Fax: 513.321.7502 | stevensoncolor.com

Our Stevenson Quality Assurance Team has thoroughly reviewed this file. Upon receipt, please check this file carefully. Our client and its suppliers are responsible for all content, color, legal and regulatory text and product information. Stevenson will, at our cost, replace our product if the work is found to be incorrect at this stage. Should an error be found subsequent to client/supplier approval, Stevenson shall be responsible only for the replacement of the artwork containing the error, and in addition, shall not be held liable for any consequential changes, charges or losses incurred as a result of any error.

100mm LINE

1/8

PRINT LIMIT

1/8

3/16 PRINT LIMIT

7/16 GLUE FLAP

12 13/16

12 3/8 VARNISHED AREA

4 7/8

1/8 PRINT LIMIT

4 3/8

NUTRIENTS

PER 100 g POWDER

PER 100 g POWDER

PROTEIN EQUIVALENT, g

FAT, g

CARBOHYDRATE, g

LINEOLIC ACID, mg

30.0

14.0

35.0

2200

VITAMINS

VITAMIN A, IU (mcg RE)

VITAMIN D, IU (mcg)

VITAMIN E, IU (mg α-TE)

VITAMIN K, mcg

THIAMIN (VIT. B₁), mg

RIBOFLAVIN (VIT. B₂), mg

VITAMIN B₆, mg

VITAMIN B₁₂, mcg

2200(660)

300(7.5)

18(12.1)

60

3.3

1.8

1.3

5.0

MINERALS

CALCIUM, mg

PHOSPHORUS, mg

MAGNESIUM, mg

IRON, mg

ZINC, mg

MANGANESE, mg

COPPER, mg

880

760

225

13

0.8

0.8

1.0

PER 100 g POWDER

PER 100 g POWDER

PER 100 g POWDER

LINEOLIC ACID, mg

L-CARNITINE, mg

CALORIES

NIACIN, mg (mg NE)

FOLIC ACID (FOLACIN), mcg

PANTOTHENIC ACID, mg

BIOTIN, mcg

VITAMIN C (ASCORBIC ACID), mg

CHOLINE, mg

INOSITOL, mg

IODINE, mcg

SELENIUM, mcg

CHROMIUM, mcg

MOLYBDENUM, mcg

SODIUM, mg (mEq)

POTASSIUM, mg (mEq)

CHLORIDE, mg (mEq)

225

40

410

16(21.7)

450

8.0

100

60

100

70

100

35

27

30

880(38.3)

1370(35.0)

1160(32.7)

INGREDIENTS:

CORN SYRUP SOLIDS, HIGH OLEIC SAFFLOWER OIL, COCONUT OIL, SODIUM CITRATE, SOY OIL, L-LEUCINE, L-LYSINE ACETATE, L-PROLINE, L-GLUTAMINE, L-VALINE, CALCIUM PHOSPHATE, L-ISOLEUCINE, L-ARGININE, GLYCINE, L-ALANINE, L-TYROSINE, LESS THAN 2% OF: MAGNESIUM PHOSPHATE, L-PHENYLALANINE, POTASSIUM CHLORIDE, L-ASPARAGINE, L-SERINE, L-THREONINE, L-CYSTINE DIHYDROCHLORIDE, SILICON DIOXIDE, L-HISTIDINE, DATEM, POTASSIUM CITRATE, POTASSIUM PHOSPHATE, L-GLUTAMIC ACID, L-TRYPTOPHAN, L-ASPARTIC ACID, CALCIUM CARBONATE, ASCORBIC ACID, TAURINE, CHOLINE CHLORIDE, m-INOSITOL, FERROUS SULFATE, ZINC SULFATE, L-CARNITINE, NIACIN-AMIDE, d-ALPHA-TOCOPHERYL ACETATE, CALCIUM PANTOTHENATE, ASCORBYL PALMITATE, MIXED TOCOPHEROLS, CUPRIC SULFATE, MANGANESE SULFATE, THIAMINE CHLORIDE HYDROCHLORIDE, RIBOFLAVIN, VITAMIN A PALMITATE, PYRIDOXINE HYDROCHLORIDE, FOLIC ACID, CHROMIUM CHLORIDE, POTASSIUM IODIDE, BETA-CAROTENE, BIOTIN, SODIUM SELENATE, PHYLOQUINONE, SODIUM MOLYBDATE, VITAMIN D₃ AND CYANOCOBALAMIN.

USE ONLY AS DIRECTED BY A PHYSICIAN

Directions for Preparation and Use

Depending on specific needs of each individual, preparation will vary as prescribed by physician. Follow physician's instructions carefully.

1 Wash your hands, surfaces and utensils

2 Add prescribed amount of Hominex-2 powder (and other ingredients if recommended)

3 Shake well for 10-15 seconds; if using a blender, mix no more than 5 seconds

Pour prescribed amount of water into clean container

Pour mixture into clean feeding cup or container; cap

Serve chilled. Once feeding begins, use within 1 hour or discard.

Storage Once mixed, store container in refrigerator and use within 24 hours. Store unopened or opened can at room temperature; avoid extreme temperatures. Use opened can contents within 1 month.

Warning This medical food should not be heated or used in cooking.

USE BY DATE ON BOTTOM OF CAN

Helpful Hints

Add sweetened drink crystals to enhance flavor

Mix Hominex-2 with fruit to make a smoothie

Add chocolate or strawberry syrup

Freeze flavored mixture in slushies

Mixing Guide

Approximate weights for unpacked, level, dry U.S. standard household measures for powder

1 Tbsp 8 g

1/4 Cup 30 g

1/3 Cup 40 g

1/2 Cup 60 g

1 Cup 120 g

FOR MOST ACCURATE RESULTS, HOMINEX-2 SHOULD BE WEIGHED ON A SCALE THAT READS IN GRAMS.

An FSSAI initiative

This is register an infant milk substitute

not an infant food.

Manufactured by and Country of Origin:

Abbott Laboratories, 901 North Centerville Road, Sturgis, MI 48091, USA

Imported and Marketed by:

Abbott Healthcare Pvt. Ltd., Regd. Office: 4, Corporate Park, Sion - Trombay Road, Mumbai - 400 071

Lic. No. 100120220000149

For product related queries, contact Customer Care Officer at Marketed by address or call 1800 266 0448 (toll free) or email: webmaster@india.abbott.com

FOOD FOR SPECIAL MEDICAL PURPOSE (To be taken under medical advice)

Mfg. Date: XX XXX XXXX

Exp. Date: XX XXX XXXX

Batch No.: XXXXXXXXX

MRP ₹: XXXXX/- (Inclusive of all taxes)

Lic. No. XXXX

Commodity No. XXXXXXXXX

Abbott

Hominex[®]-2

Amino Acid-Modified Medical Food

METHIONINE-FREE

For nutrition support of children and adults with vitamin B₆-nonresponsive homocystinuria or hypermethioninemia

PRECAUTIONS:

Not intended as a sole source of nutrition. Give only to children and adults with proven vitamin B₆-nonresponsive homocystinuria or hypermethioninemia who are under medical supervision. Must be supplemented with protein and fluid in prescribed amounts to completely meet methionine and water requirements.

NOT FOR IV USE

NOT FOR INFANTS UNDER 1 YEAR OF AGE

NET WT. 14.1 OZ (400 g)

Powder

Abbott Nutrition

51118-14.1-L-C0012-HM2-S

PRESS STATIONS

PROCESS BLACK

PMS 1655 CV ORANGE

V VARNISH

PROOF:

EPSON

KODAK

APPROVED*

DISAPPROVED

PRINTER: CENVEO

CAD: PK100987 REV D

PREV. COMMODITY: 40424

GS: GL0370

Generic Specification

*Approved proof is accurate for copy, size, upc, and process builds. Match spot color(s) to approved ink drawdown(s) if applicable.

12 13/16

PER 100 g POWDER		PER 100 g POWDER	
NUTRIENTS			
PROTEIN EQUIVALENT, g	15.0	LINOLEIC ACID, mg	350
FAT, g	21.7	L-CARNITINE, mg	900
CARBOHYDRATE, g	53.0	CALORIES	480
LINOLEIC ACID, mg	3500		
VITAMINS			
VITAMIN A, IU (mcg RE)	1400 (42.0)	NIACIN, mcg (mg NE)	10000 (12.8)
VITAMIN D, IU (mcg)	300 (7.5)	FOLIC ACID / FOLACIN, mcg	230
VITAMIN E, IU (mcg α -TE)	15 (10.1)	PANTOTHENIC ACID, mcg	6900
VITAMIN K, mcg	50	BIOTIN, mcg	65
THIAMIN (Vit. B ₁), mcg	1900	VITAMIN C	
RIBOFLAVIN (Vit. B ₂), mcg	900	ASCORBIC ACID, mg	50
VITAMIN B ₃ , mcg	750	CHOLINE, mg	80
VITAMIN B ₆ , mcg	4.9	INOSITOL, mg	40
MINERALS			
CALCIUM, mg	575	IODINE, mcg	65
PHOSPHORUS, mg	400	SELENIUM, mcg	20
MAGNESIUM, mg	50	CHROMIUM, mcg	11
IRON, mg	9	MOLYBDENUM, mcg	12
ZINC, mg	8	SODIUM, mg (mEq)	190 (8.3)
MANGANESE, mcg	500	POTASSIUM, mg (mEq)	675 (17.3)
COPPER, mcg	1100	CHLORIDE, mg (mEq)	325 (9.2)
INGREDIENTS: CORN SYRUP SOLIDS, HIGH OLEIC SAFFLOWER OIL, COCOA BUTTER, SOY OIL, L-ALANINE, L-GLUTAMIC ACID, LESS THAN 2% OF: L-ASPARTIC ACID, L-PROLINE, L-LYSINE ACETATE, CALCIUM PHOSPHATE, L-ARGININE, DATEM, POTASSIUM PHOSPHATE, GLYCINE, L-CARNITINE, L-TYROSINE, L-PHENYLALANINE, L-SERINE, L-THREONINE, SODIUM CITRATE, POTASSIUM CITRATE, L-VALINE, MAGNESIUM CHLORIDE, L-ISO-LEUCINE, L-HISTIDINE, L-METHIONINE, CALCIUM CARBONATE, L-CYSTINE DIHYDROCHLORIDE, ASCORBIC ACID, L-TRYPTOPHAN, CHOLINE CHLORIDE, TAURINE, α -INOSITOL, FERROUS SULFATE, ZINC SULFATE, ASCORBYL PALMITATE, α -PHALA-TOCOPHERYL ACETATE, NIACINAMIDE, MIXED TOCOPHEROLS, CALCIUM PANTOTHENATE, SALT, COPRIC SULFATE, THIAMINE CHLORIDE HYDROCHLORIDE, MANGANESE SULFATE, VITAMIN A PALMITATE, RIBOFLAVIN, PYRIDOXINE HYDROCHLORIDE, FOLIC ACID BETA-CAROTENE, POTASSIUM IODIDE, BIOTIN, PHYLLOQUINONE, SODIUM SELENATE, CHROMIUM CHLORIDE, SODIUM MOLYBDATE, VITAMIN D ₃ AND CYANOCOBALAMIN.			

Abbott Nutrition, Abbott Laboratories
Columbus, Ohio 43219-3034 USA

USE ONLY AS DIRECTED BY A PHYSICIAN
Directions for Preparation and Use

Your baby's health depends on carefully following these directions. Proper hygiene, handling and storage are important when preparing infant formula. Failure to follow these directions could result in severe harm. Ask your baby's doctor if you need to use cooled, boiled water for mixing and if you need to boil (sterilize) bottles, nipples and rings before use.

- 1** Wash your hands, surfaces and utensils
- 2** Add prescribed amount of I-Valex®-1 powder (and other ingredients if recommended)
- 3** Shake well for 10-15 seconds; if using a blender, mix no more than 5 seconds
- Pour prescribed amount of water into clean container
- Pour mixture into clean feeding bottles or container; cap

Once feeding begins, use within 1 hour or discard

Storage Once mixed, store bottles or container in refrigerator and **feed to baby or child within 24 hours**. Store unopened or opened can at room temperature; avoid extreme temperatures. **Use opened can contents within 1 month.**

Warning Powdered infant formulas are not sterile and should not be fed to premature infants or infants who might have immune problems unless directed and supervised by your baby's doctor. **Never use a microwave to warm formula.** Serious burns can result.

USE BY DATE ON BOTTOM OF CAN

To meet the nutrient needs of the infant or child, infant formula, breast milk or additional food choices must be given to supply protein and leucine requirements. These may be added to the I-Valex-1 mixture or prepared separately as instructed. Depending on the specific needs of each patient, preparation will vary as prescribed by physician.

Mixing Guide

Approximate weights for unpacked, level, dry
U.S. standard household measures for powder

1 Tbsp	8 g	1/2 Cup	60 g
1/4 Cup	30 g	1 Cup	120 g
1/3 Cup	40 g		

FOR MOST ACCURATE RESULTS, I-VALEX-1 SHOULD BE WEIGHED ON A SCALE THAT READS IN GRAMS.



An FSSAI initiative
This is neither an infant milk substitute
nor an infant food.
Manufactured by and Country of Origin
Abbott Laboratories, 901 North
Centerville Road, Skokie, MI 49091, USA
Imported and Marketed by:
Abbott Healthcare Pvt. Ltd., Regd.
Office, 4, Corporate Park, Sion - Trombay
Road, Mumbai - 400 071



For product related queries, contact
Customer Care Officer at Marketed
by address or call 1800 266 0448
(Toll free) or
email: webmasterindia@abbott.com
For *Isotonic Acidemia*
**FOOD FOR SPECIAL MEDICAL
PURPOSE**
(To be taken under medical advice)
Mfg. Date: XX XXX XXXX
Expiry Date: XX XXX XXXX
Batch No.: XXXXXXXX
MHP #: XXXX/-
(Inclusive of all taxes)



Abbott

I-Valex®-1
Amino Acid-Modified
Infant Formula With Iron
LEUCINE-FREE

For nutrition support of infants and toddlers with a disorder of leucine catabolism

PRECAUTIONS:

Not intended as a sole source of nutrition. Give only to infants and toddlers with proven disorders of leucine catabolism who are under medical supervision. Must be supplemented with protein and fluid in prescribed amounts to completely meet leucine and water requirements.

NOT FOR IV USE

NET WT. 14.1 OZ (400 g)

Powder



51136-14.1-L-C0007-IV1-A

PROCESS
BLACK

PMS 479 CV
TAN

 VARNISH

PROOF:

PRINTER: CENVEO

CAD: PK100987 REV D
PBEV COMMODITY: 40426

EPSON

KODAN

APPROVED*

DISAPPROVED

GS⁺: GL0370
Generic Specification

*Approved proof is accurate for copy, size, upc, and process builds.
Match spot color(s) to approved ink drawdown(s) if applicable.

stevenson

Ensuring visual excellence.

Prepress/Assembly

Job Description: I-Valex-2 14.1oz #C0013

Job Number: 13.5528

File Name: A5528DC0013

Final Artwork Size: 12.8125" x 4.375"

Operator: MO

Customer: Abbott Nutrition

Vendor: XXXXXX

Printer: Cenvéo Toledo

Last Modified: 9/23/13 8:43 AM

Our Stevenson Quality Assurance Team has thoroughly reviewed this file. Upon receipt, please check this file carefully. Our client and its suppliers are responsible for all content, color, legal and regulatory text and product information. Stevenson will, at our cost, replace our product if the work is found to be incorrect at this stage. Should an error be found subsequent to client/supplier approval, Stevenson shall be responsible only for the replacement of the artwork containing the error, and in addition, shall not be held liable for any consequential changes, charges or losses incurred as a result of any error.

VERSION 1

Workflow: EFI_Abbott_SWOP_Offset

Black

PANTONE 479 C

Varnish

Die

Stevenson Color, Inc. | 535 Wilmer Avenue Cincinnati, Ohio 45226 | Telephone: 513.321.7500 Fax: 513.321.7502 | stevensoncolor.com

100mm LINE

1/8

PRINT LIMIT

1/8

12 3/8 VARNISHED AREA

4 7/8

1/8 PRINT LIMIT

4 3/8

12 13/16

7/16 GLUE FLAP

3/16 PRINT LIMIT

NUTRIENTS

PER 100 g POWDER

PER 100 g POWDER

PROTEIN EQUIVALENT, g

FAT, g

CARBOHYDRATE, g

LINEOLIC ACID, mg

2200 (660)

300 (7.5)

18 (12.1)

.60

VITAMINS

VITAMIN A, IU (mcg RE)

VITAMIN D, IU (mcg)

VITAMIN E, IU (mg α-TE)

VITAMIN K, mcg

THIAMIN (vit. B₁), mg

RIBOFLAVIN (vit. B₂), mg

VITAMIN B₆, mg

VITAMIN B₁₂, mcg

2200 (660)

300 (7.5)

18 (12.1)

.60

3.3

1.8

1.3

5.0

MINERALS

CALCIUM, mg

PHOSPHORUS, mg

MAGNESIUM, mg

IRON, mg

ZINC, mg

MANGANESE, mg

COPPER, mg

880

760

225

13

13

0.8

1.0

INGREDIENTS:

CORN SYRUP SOLIDS, L-ALANINE, HIGH OLEIC SAFFLOWER OIL, COCONUT OIL, SODIUM CITRATE, SOY OIL, L-GLUTAMIC ACID, L-ASPARTIC ACID, L-ARGININE, L-PROLINE, L-LYSINE ACETATE, CALCIUM PHOSPHATE, L-GLYCINE, L-CARNITINE, L-TYROSINE, LESS THAN 2% OF: L-PHENYLALANINE, MAGNESIUM PHOSPHATE, POTASSIUM CHLORIDE, L-SERINE, L-THREONINE, SILICON DIOXIDE, L-VALINE, L-ISOLEUCINE, L-HISTIDINE, DATEM, POTASSIUM CITRATE, POTASSIUM PHOSPHATE, L-METHIONINE, L-CYSTINE DIHYDROCHLORIDE, L-TRYPTOPHAN, CALCIUM CARBONATE, ASCORBIC ACID, TAURINE, CHOLINE CHLORIDE, m-INOSITOL, FERROUS SULFATE, ZINC SULFATE, NIACINAMIDE, dl-ALPHA-TOCOPHERYL ACETATE, CALCIUM PANTOTHENATE, ASCORBYL PALMITATE, MIXED TOCOPHEROLS, GUAR GUM, MANGANESE SULFATE, THIAMINE CHLORIDE HYDROCHLORIDE, RIBOFLAVIN, VITAMIN A PALMITATE, PYRIDOXINE HYDROCHLORIDE, FOLIC ACID, CHROMIUM CHLORIDE, POTASSIUM IODIDE, BETA-CAROTENE, BIOTIN, SODIUM SELENATE, PHYLLAQUINONE, SODIUM MOLYBDATE, VITAMIN D₃ AND CYANOCOBALAMIN.

USE ONLY AS DIRECTED BY A PHYSICIAN

Directions for Preparation and Use

Depending on specific needs of each individual, preparation will vary as prescribed by physician. Follow physician's instructions carefully.

1 Wash your hands, surfaces and utensils

2 Add prescribed amount of I-Valex®-2 powder (and other ingredients if recommended)

3 Shake well for 10-15 seconds; if using a blender, mix no more than 5 seconds

Pour prescribed amount of water into clean container

Pour mixture into clean feeding cup or container; cap

Serve chilled. Once feeding begins, use within 1 hour or discard.

Storage Once mixed, store container in refrigerator and use within 24 hours. Store unopened or opened can at room temperature; avoid extreme temperatures. Use opened can contents within 1 month.

Warning This medical food should not be heated or used in cooking.

Helpful Hints

Add sweetened drink crystals to enhance flavor

Add chocolate or strawberry syrup

Mix I-Valex-2 with fruit to make a smoothie

Freeze flavored mixture in slushies

Mixing Guide

Approximate weights for unpacked, level, dry U.S. standard household measures for powder

1 Tbsp 8 g

1/4 Cup 30 g

1/3 Cup 40 g

1/2 Cup 60 g

1 Cup 120 g

FOR MOST ACCURATE RESULTS, I-VALEX-2 SHOULD BE WEIGHED ON A SCALE THAT READS IN GRAMS.

Abbott Nutrition, Abbott Laboratories

Columbus, Ohio 43219-3034 USA

Abbott

I-Valex®-2

Amino Acid-Modified Medical Food

LEUCINE-FREE

For nutrition support of children and adults with a disorder of leucine catabolism

PRECAUTIONS: Not intended as a sole source of nutrition. Give only to children and adults with proven disorders of leucine catabolism who are under medical supervision. Must be supplemented with protein and fluid in prescribed amounts to completely meet leucine and water requirements.

NOT FOR IV USE

NOT FOR INFANTS UNDER 1 YEAR OF AGE

NET WT. 14.1 OZ (400 g)

Powder

Abbott Nutrition

51138-14.1-L-C0013-IV2-S

TURN OVERPRINT PREVIEW ON TO DISPLAY CORRECTLY

PROCESS BLACK

PMS 479 CV TAN

V VARNISH

PROOF: EPSON KODAK

APPROVED* DISAPPROVED

PRINTER: CENVEO

CAD: PK100987 REV D

PREV. COMMODITY: 40428

GS*: GL0370

*Generic Specification

SIGNATURE

*Approved proof is accurate for copy, size, upc, and process builds. Match spot color(s) to approved ink drawdown(s) if applicable.

PRINT LIMIT

1/8

1/8

12 3/8
VARNISHED AREA

NUTRIENTS

	PER 100 g POWDER	PER 100 g POWDER
PROTEIN EQUIVALENT, g	0	400
FAT, g	28.0	25
CARBOHYDRATE, g	65.0	510
LINOLEIC ACID, mg	4400	

VITAMINS

VITAMIN A, IU (mcg RE)	2000 (600)	14000 (14.0)
VITAMIN D, IU (mcg)	400 (10.0)	300
VITAMIN E, IU (mg α-TE)	19 (12.8)	7000
VITAMIN K, mcg	60	80
THIAMIN (vit. B ₁), mcg	2100	70
RIBOFLAVIN (vit. B ₂), mcg	1000	100
VITAMIN B ₆ , mcg	970	50
VITAMIN B ₁₂ , mcg	6.5	

MINERALS

CALCIUM, mg	750	80
PHOSPHORUS, mg	525	30
MAGNESIUM, mg	70	14
IRON, mg	11.9	15
ZINC, mg	11	250 (10.9)
MANGANESE, mcg	700	875 (22.4)
COPPER, mcg	1450	350 (8.9)

INGREDIENTS: CORN SYRUP SOLIDS, HIGH OLEIC SAFFLOWER OIL, COCONUT OIL, SOY OIL; LESS THAN 2% OF: CALCIUM PHOSPHATE, DATEM, POTASSIUM PHOSPHATE, SODIUM CITRATE, POTASSIUM CITRATE, MAGNESIUM CHLORIDE, CALCIUM CARBONATE, ASCORBIC ACID, CHOLINE CHLORIDE, TAURINE, m-INOSITOL, FERROUS SULFATE, ZINC SULFATE, ASCORBYL PALMITATE, L-CARNITINE, dl-ALPHA-TOCOPHERYL ACETATE, NIACINAMIDE, MIXED TOCOPHEROLS, CALCIUM PANTOTHENATE, SALT, CUPRIC SULFATE, THIAMINE CHLORIDE HYDROCHLORIDE, MANGANESE SULFATE, VITAMIN A PALMITATE, RIBOFLAVIN, PYRIDOXINE HYDROCHLORIDE, FOLIC ACID, BETA-CAROTENE, POTASSIUM IODIDE, BIOTIN, PHYLOQUINONE, SODIUM SELENATE, CHROMIUM CHLORIDE, SODIUM MOLYBDATE, VITAMIN D₃ AND CYANOCOBALAMIN.

Abbott Nutrition
Abbott Laboratories
Columbus, Ohio 43219-3034 USA

USE ONLY AS DIRECTED BY A PHYSICIAN
Directions for Preparation and Use

Your baby's health depends on carefully following these directions. Proper hygiene, handling and storage are important when preparing infant formula. Failure to follow these directions could result in severe harm. Ask your baby's doctor if you need to use cooled, boiled water for mixing and if you need to boil (sterilize) bottles, nipples and rings before use.

1 Wash your hands, surfaces and utensils

Pour prescribed amount of water into clean container

2 Add prescribed amount of Pro-Phree® powder (and other ingredients if recommended)

3 Shake well for 10-15 seconds; if using a blender, mix no more than 5 seconds

Pour mixture into clean feeding bottles or container; cap

Once feeding begins, use within 1 hour or discard

Storage Once mixed, store bottles or container in refrigerator and **feed to baby or child within 24 hours**. Store unopened or opened can at room temperature; avoid extreme temperatures. **Use opened can contents within 1 month.**

Warning Powdered infant formulas are not sterile and should not be fed to premature infants or infants who might have immune problems unless directed and supervised by your baby's doctor. **Never use a microwave to warm formula.** Serious burns can result.

USE BY DATE ON BOTTOM OF CAN

To meet the nutrient needs of the infant or child, infant formula, breast milk or additional food choices must be given to supply protein requirements. These may be added to the Pro-Phree mixture or prepared separately as instructed. Depending on the specific needs of each patient, preparation will vary as prescribed by physician.

Mixing Guide

Approximate weights for unpacked, level, dry U.S. standard household measures for powder

1 Tbsp 8 g	1/2 Cup 60 g
1/4 Cup 30 g	1 Cup 120 g
1/3 Cup 40 g	

FOR MOST ACCURATE RESULTS, PRO-PHREE SHOULD BE WEIGHED ON A SCALE THAT READS IN GRAMS.

An FSSAI initiative. This is neither an infant milk substitute nor an infant food. Manufactured by and Country of Origin: Abbott Laboratories, 901 North Centerville Road, Sturgis, MI 49091, USA. Imported and Marketed by: Abbott Healthcare Pvt. Ltd., Regd. Office, 4, Corporate Park, Sion - Trombay Road, Mumbai - 400 071. Lic. No. 100120220000149

For product related queries, contact Customer Care Officer at Mailboxed by address or call 1800 266 0448 (toll free) or email: webmasterindia@abbott.com For Amino Acid Metabolic Disorder FOOD FOR SPECIAL MEDICAL PURPOSE (To be taken under medical advice) Mfg. Date: XX.XXX.XXXX Expiry Date: XX.XXX.XXXX Batch No.: XXXXXXXXXX MRP ₹: XXXXX/- (Inclusive of all taxes) Lot No. XXXX Commodity No. XXXXXXXXXX

1/8 PRINT LIMIT

4 7/8

4 3/8

12 13/16

3/16 PRINT LIMIT

7/16 GLUE FLAP

51148-14.1-L-C0001-PPH-A

PROCESS BLACK ☐

PMS 2577 CV PURPLE ☐

☐

☐

☒ VARNISH

☐

☐

☐

PROOF: ☒ EPSON ☐ KODAK ☐ APPROVED* ☐ DISAPPROVED

PRINTER: CENVEO

CAD: PK100987 REV D
PREV. COMMODITY: 40440

GS[†]: GL0370
[†]Generic Specification

SIGNATURE

*Approved proof is accurate for copy, size, upc, and process builds. Match spot color(s) to approved ink drawdown(s) if applicable.

*Approved proof is accurate for copy, size, upc, and process builds.
Match spot color(s) to approved ink drawdown(s) if applicable.

stevenson

Prepress/Assembly

Job Description: Phenex-2 14.1oz #C0015

Job Number: 13.5576

Customer: Abbott Nutrition

File Name: A5576DC0015

Vendor: XXXXXX

Final Artwork Size: 12.8125" x 4.375"

Printer: Cenvoe Toledo

Operator: MO

Last Modified: 9/25/13 7:42 AM

Ensuring visual excellence.

VERSION 1

Workflow: EFI_Abbott_SWOP_Offset

Black

PANTONE 279 C

Varnish

Die

1% 25% 50% 75% 100%

2% 50% 100%

50% 100%

2% 50% 100%

50% 100%

2% 50% 100%

Stevenson Color, Inc. | 535 Wilmer Avenue Cincinnati, Ohio 45226 | Telephone: 513.321.7500 Fax: 513.321.7502 | stevensoncolor.com

Our Stevenson Quality Assurance Team has thoroughly reviewed this file. Upon receipt, please check this file carefully. Our client and its suppliers are responsible for all content, color, legal and regulatory text and product information. Stevenson will, at our cost, replace our product if the work is found to be incorrect at this stage. Should an error be found subsequent to client/supplier approval, Stevenson shall be responsible only for the replacement of the artwork containing the error, and in addition, shall not be held liable for any consequential changes, charges or losses incurred as a result of any error.

100mm LINE

1/8

PRINT LIMIT

100mm LINE

1/8

3/16 PRINT LIMIT

7/16 GLUE FLAP

12 13/16

12 3/8 VARNISHED AREA

4 7/8

1/8 PRINT LIMIT

4 3/8

NUTRIENTS

PER 100 g POWDER

PER 100 g POWDER

PROTEIN EQUIVALENT, g 30.0

FAT, g 14.0

CARBOHYDRATE, g 35.0

LINEOLIC ACID, mg 2200

VITAMINS

VITAMIN A, IU (mcg RE) 2200 (660)

VITAMIN D, IU (mcg) 300 (7.5)

VITAMIN E, IU (mg α-TE) 18 (12.1)

VITAMIN K, mcg 60

THIAMIN (VIT. B1), mg 3.3

RIBOFLAVIN (VIT. B2), mg 1.8

VITAMIN B6, mg 1.3

VITAMIN B12, mcg 5.0

MINERALS

CALCIUM, mg 880

PHOSPHORUS, mg 760

MAGNESIUM, mg 225

IRON, mg 13

ZINC, mg 13

MANGANESE, mg 0.8

COPPER, mg 1.0

INGREDIENTS:

CORN SYRUP SOLIDS, HIGH OLEIC SAFFLOWER OIL, COCONUT OIL, SODIUM CITRATE, SOY OIL, L-LEUCINE, L-TYROSINE, L-PROLINE, L-LYSINE ACETATE, L-GLUTAMINE, L-VALINE, CALCIUM PHOSPHATE, L-ISOLEUCINE, L-ARGININE, L-ALANINE, GLYCINE, MAGNESIUM PHOSPHATE, LESS THAN 2% OF: POTASSIUM CHLORIDE, L-ASPARAGINE, L-SERINE, L-THREONINE, SILICON DIOXIDE, L-HISTIDINE, DATEM, POTASSIUM CITRATE, POTASSIUM PHOSPHATE, L-METHIONINE, L-GLUTAMIC ACID, L-CYSTINE DIHYDROCHLORIDE, L-TRYPTOPHAN, L-ASPARTIC ACID, CALCIUM CARBONATE, ASCORBIC ACID, TAURINE, CHOLINE CHLORIDE, m-INOSITOL, FERROUS SULFATE, ZINC SULFATE, L-CARNITINE, NIACINAMIDE, DI-ALPHA-TOCOPHERYL ACETATE, CALCIUM PANTOTHENATE, ASCORBYL PALMITATE, MIXED TOCOPHEROLS, CUPRIC SULFATE, MANGANESE SULFATE, THIAMINE CHLORIDE HYDROCHLORIDE, RIBOFLAVIN, VITAMIN A PALMITATE, PYRIDOXINE HYDROCHLORIDE, FOLIC ACID, CHROMIUM CHLORIDE, POTASSIUM IODIDE, BETA-CAROTENE, BIOTIN, SODIUM SELENATE, PHYLOQUINONE, SODIUM MOLYBDATE, VITAMIN D2 AND CYANOCOBALAMIN.

Abbott Nutrition, Abbott Laboratories

Columbus, Ohio 43219-3034 USA

USE ONLY AS DIRECTED BY A PHYSICIAN

Directions for Preparation and Use

Depending on specific needs of each individual, preparation will vary as prescribed by physician. Follow physician's instructions carefully.

1 Wash your hands, surfaces and utensils

2 Add prescribed amount of Phenex®-2 powder (and other ingredients if recommended)

3 Shake well for 10-15 seconds; if using a blender, mix no more than 5 seconds

Pour prescribed amount of water into clean container

Pour mixture into clean feeding cup or container; cap

Serve chilled. Once feeding begins, use within 1 hour or discard.

Storage Once mixed, store container in refrigerator and use within 24 hours. Store unopened or opened can at room temperature; avoid extreme temperatures. Use opened can contents within 1 month.

Warning This medical food should not be heated or used in cooking.

USE BY DATE ON BOTTOM OF CAN

Helpful Hints

Add sweetened drink crystals to enhance flavor

Add chocolate or strawberry syrup

Mix Phenex-2 with fruit to make a smoothie

Freeze flavored mixture in slushies

Mixing Guide

Approximate weights for unpacked, level, dry U.S. standard household measures for powder

1 Tbsp 8 g

1/4 Cup 30 g

1/3 Cup 40 g

1/2 Cup 60 g

1 Cup 120 g

FOR MOST ACCURATE RESULTS, PHENEX-2 SHOULD BE WEIGHED ON A SCALE THAT READS IN GRAMS.

Diet Life

An FSSAI Initiative

This is neither an infant milk substitute nor an infant food.

Manufactured by and Country of Origin: Abbott Laboratories, 901 North Centerville Road, Sturgis, MI 48091, USA

Imported and Marketed by: Abbott Healthcare Pvt. Ltd., Regd. Office, 4, Corporate Park, Sion - Trombay Road, Mumbai - 400 071

Lic. No. T00120220000149

For product related queries, contact Customer Care Officer at Marketed by address or call 1800 266 0448 (toll free) or email: webmaster.india@abbott.com

FOOD FOR SPECIAL MEDICAL PURPOSE (To be taken under medical advice)

Mfg. Date: XX.XXXX.XXXX

Expiry Date: XX.XXXX.XXXX

Batch No.: XXXXXXXXXX

MSP: ₹. XXXXX (Inclusive of all taxes)

Lic. No. XXXX

Commodity No. XXXXXXXXXX

Abbott

Phenex®-2

Amino Acid-Modified Medical Food

PHENYLALANINE-FREE

For nutrition support of children and adults with phenylketonuria (PKU)

PRECAUTIONS:

Not intended as a sole source of nutrition. Give only to children and adults with proven phenylketonuria (PKU) who are under medical supervision. Must be supplemented with protein and fluid in prescribed amounts to completely meet phenylalanine and water requirements.

NOT FOR IV USE

NOT FOR INFANTS UNDER 1 YEAR OF AGE

Unflavored

NET WT. 14.1 OZ (400 g)

Powder

Abbott Nutrition

51122-14.1-L-C0015-PH2-S

TURN OVERPRINT PREVIEW ON TO DISPLAY CORRECTLY

PLEASE CONTACT LABELING SPECIALIST FOR INSTRUCTIONS

PROOF:

EPSON

KODAK

APPROVED*

DISAPPROVED

PRINTER: CENVOE

CAD: PK100987 REV D

PREV. COMMODITY: 40436

GS: GL0370

*Generic Specification

PROCESS BLACK

PMS 279 CV BLUE

VARNISH

*Approved proof is accurate for copy, size, upc, and process builds. Match spot color(s) to approved ink drawdown(s) if applicable.

1/8

PRINT LIMIT

1/8

12 3/8
VARNISHED AREA

NUTRIENTS

PER 100 g POWDER	PER 100 g POWDER
PROTEIN EQUIVALENT, g 7.5	LINOLENIC ACID, mg 375
FAT, g 24.6	L-CARNITINE, mg 190
CARBOHYDRATE, g 57.0	CALORIES 510
LINOLEIC ACID, mg 3900	

VITAMINS

PER 100 g POWDER	PER 100 g POWDER
VITAMIN A, IU (mcg RE) 1600 (480)	NIACIN, mcg (mg NE) 12000 (16.7)
VITAMIN D, IU (mcg) 300 (7.5)	FOLIC ACID (POLACIN), mcg 250
VITAMIN E, IU (mg α-TE) 17 (11.4)	PANTOTHENIC ACID, mcg 7800
VITAMIN K, mcg 60	BIOTIN, mcg 75
THIAMIN (vit. B ₁), mcg 2000	VITAMIN C (ASCORBIC ACID), mg 60
RIBOFLAVIN (vit. B ₂), mcg 1000	CHOLINE, mg 100
VITAMIN B ₆ , mcg 850	INOSITOL, mg 50
VITAMIN B ₁₂ , mcg 5.6	

MINERALS

PER 100 g POWDER	PER 100 g POWDER
CALCIUM, mg 650	IODINE, mcg 80
PHOSPHORUS, mg 455	SELENIUM, mcg 25
MAGNESIUM, mg 55	CHROMIUM, mcg 12
IRON, mg 10	MOLYBDENUM, mcg 13
ZINC, mg 9.5	SODIUM, mg (mEq) 215 (9.4)
MANGANESE, mcg 500	POTASSIUM, mg (mEq) 760 (19.4)
COPPER, mcg 1250	CHLORIDE, mg (mEq) 390 (11.0)

INGREDIENTS: CORN SYRUP SOLIDS, HIGH OLEIC SAFFLOWER OIL, COCONUT OIL, SOY OIL, L-LEUCINE, LESS THAN 2% OF: L-LYSINE ACETATE, CALCIUM PHOSPHATE, L-VALINE, DATEM, L-ISOLEUCINE, POTASSIUM PHOSPHATE, L-TYROSINE, L-THREONINE, L-PHENYLALANINE, SODIUM CITRATE, POTASSIUM CITRATE, MAGNESIUM CHLORIDE, L-CYSTINE DIHYDROCHLORIDE, L-HISTIDINE, L-METHIONINE, L-TRYPTOPHAN, CALCIUM CARBOXYLATE, ASCORBIC ACID, L-CARNITINE, CHOLINE CHLORIDE, TAURINE, m-INOSITOL, FERROUS SULFATE, ZINC SULFATE, ASCORBYL PALMITATE, dl-ALPHA-TOCOPHERYL ACETATE, NIACINAMIDE, MIXED TOCOPHEROLS, CALCIUM PANTOTHENATE, SALT, CUPRIC SULFATE, THIAMINE CHLORIDE HYDROCHLORIDE, MANGANESE SULFATE, VITAMIN A PALMITATE, RIBOFLAVIN, PYRIDOXINE HYDROCHLORIDE, FOLIC ACID, BETA-CAROTENE, POTASSIUM IODIDE, BIOTIN, PHYLOQUINONE, SODIUM SELENATE, CHROMIUM CHLORIDE, SODIUM MOLYBDATE, VITAMIN D₃ AND CYANOCOBALAMIN.

Abbott Nutrition, Abbott Laboratories
Columbus, Ohio 43219-3034 USA

USE ONLY AS DIRECTED BY A PHYSICIAN
Directions for Preparation and Use

Your baby's health depends on carefully following these directions. Proper hygiene, handling and storage are important when preparing infant formula. Failure to follow these directions could result in severe harm. Ask your baby's doctor if you need to use cooled, boiled water for mixing and if you need to boil (sterilize) bottles, nipples and rings before use.

1 Wash your hands, surfaces and utensils

Pour prescribed amount of water into clean container

2 Add prescribed amount of Cyclinex®-1 powder (and other ingredients if recommended)

3 Shake well for 10-15 seconds; if using a blender, mix no more than 5 seconds

Pour mixture into clean feeding bottles or container; cap

Once feeding begins, use within 1 hour or discard

Storage Once mixed, store bottles or container in refrigerator and feed to baby or child within 24 hours. Store unopened or opened can at room temperature; avoid extreme temperatures. Use opened can contents within 1 month.

Warning Powdered infant formulas are not sterile and should not be fed to premature infants or infants who might have immune problems unless directed and supervised by your baby's doctor. **Never use a microwave to warm formula.** Serious burns can result.

USE BY DATE ON BOTTOM OF CAN

To meet the nutrient needs of the infant or child, infant formula, breast milk or additional food choices must be given to supply protein requirements. These may be added to the Cyclinex-1 mixture or prepared separately as instructed. Depending on the specific needs of each patient, preparation will vary as prescribed by physician.

Mixing Guide

Approximate weights for unpacked, level, dry U.S. standard household measures for powder

1 Tbsp 8 g	1/2 Cup 60 g
1/4 Cup 30 g	1 Cup 120 g
1/3 Cup 40 g	

FOR MOST ACCURATE RESULTS, CYCLINEX-1 SHOULD BE WEIGHED ON A SCALE THAT READS IN GRAMS.

An FSSAI initiative
This is neither an infant milk substitute nor an infant food.
Manufactured by and Country of Origin: Abbott Laboratories, 901 North Centerville Road, Sturgis, MI 49091, USA
Imported and Marketed by: Abbott Healthcare Pvt. Ltd., Regd. Office, 4, Corporate Park, Sion - Trombay Road, Mumbai - 400 071
Lic. No. 10012022000149

For product related queries, contact Customer Care Officer at Marketed by address or call 1800 256 0446 (toll free) or email: webmasterinfo@abbott.com

FOOD FOR SPECIAL MEDICAL PURPOSE
(To be taken under medical advice)
Mfg. Order: XX XXX XXXX
Supply Order: XX XXX XXXX
Batch No.: XXXXXXXX
MOP #: XXXXX
(Exclusive of all taxes)
Lot No. XXXX
Commodity No. XXXXXXXX

1/8 PRINT LIMIT

4 7/8

1/8 PRINT LIMIT

4 3/8

3/16 PRINT LIMIT

7/16 GLUE FLAP

12 13/16

Abbott Nutrition

51144-14.1-L-C0004-CY1-A

PROCESS BLACK ☐ VARNISH ☒

PMS 360 CV GREEN ☐

☐

☐

PROOF: ☒ EPSON ☐ KODAK ☐

APPROVED* ☐ DISAPPROVED ☐


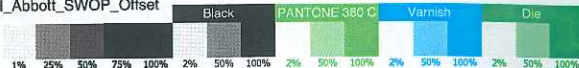
PRINTER: CENVEO

CAD: PK100987 REV D
PREV. COMMODITY: 40414

GS: GL0370
*Generic Specification

SIGNATURE

*Approved proof is accurate for copy, size, upc, and process builds. Match spot color(s) to approved ink drawdown(s) if applicable.

	Prepress/Assembly	
	Job Description: Cyclinex-2 14.1oz #C0010	
	Job Number: 13.5568	Customer: Abbott Nutrition
	File Name: A5568DC0010	Vendor: XXXXXX
Ensuring visual excellence.	Final Artwork Size: 12.8125" x 4.375"	Printer: Cenvoe Toledo
	Operator: MO	Last Modified: 9/25/13 11:10 AM
VERSION 1	Workflow: EFL_Abbott_SWOP_Offset	
		
Stevenson Color, Inc. 535 Wilmer Avenue Cincinnati, Ohio 45226 Telephone: 513.321.7500 Fax: 513.321.7502 stevensoncolor.com		

Our Stevenson Quality Assurance Team has thoroughly reviewed this file. Upon receipt, please check this file carefully. Our client and its suppliers are responsible for all content, color, legal and regulatory text and product information. Stevenson will, at our cost, replace our product if the work is found to be incorrect at this stage. Should an error be found subsequent to client/supplier approval, Stevenson shall be responsible only for the replacement of the artwork containing the error, and in addition, shall not be held liable for any consequential changes, charges or losses incurred as a result of any error.

100mm LINE

1/8

PRINT LIMIT

1/8

12 3/8

VARNISHED AREA

4 7/8

1/8 PRINT LIMIT

Abbott

Cyclinex®-2

Amino Acid-Modified Medical Food

NONESSENTIAL AMINO ACID-FREE

For nutrition support of children and adults with urea cycle disorder, gyrate atrophy or HHH syndrome

PRECAUTIONS:
Not intended as a sole source of nutrition. Give only to children and adults with a proven urea cycle disorder, gyrate atrophy or HHH syndrome who are under medical supervision. Must be supplemented with protein and fluid in prescribed amounts to completely meet protein and water requirements.
NOT FOR IV USE
NOT FOR INFANTS UNDER 1 YEAR OF AGE

NET WT. 14.1 OZ (400 g) Powder

NUTRIENTS

PER 100 g POWDER	PER 100 g POWDER
PROTEIN EQUIVALENT, g 15.0	LINOLENIC ACID, mg 275
FAT, g 17.0	L-CARNITINE, mg 370
CARBOHYDRATE, g 45.0	CALORIES 440
LINOLEIC ACID, mg 2800	

VITAMINS

VITAMIN A, IU (mcg RE) 3025 (908)	NIACIN, mg (mg NE) 21 (30.3)
VITAMIN D, IU (mcg) 325 (8.1)	FOLIC ACID (FOLACIN), mcg 530
VITAMIN E, IU (mg α-TE) 24 (16.1)	PANTOTHENIC ACID, mg 10.9
VITAMIN K, mcg 70	BIOTIN, mcg 150
THIAMIN (VIT. B ₁), mg 4.0	VITAMIN C
RIBOFLAVIN (VIT. B ₂), mg 2.4	(ASCORBIC ACID), mg 75
VITAMIN B ₆ , mg 1.8	CHOLINE, mg 130
VITAMIN B ₁₂ , mcg 7.3	INOSITOL, mg 110

MINERALS

CALCIUM, mg 1150	IODINE, mcg 150
PHOSPHORUS, mg 1020	SELENIUM, mcg 37
MAGNESIUM, mg 300	CHROMIUM, mcg 37
IRON, mg 17	MOLYBDENUM, mcg 40
ZINC, mg 1.0	SODIUM, mg (mEq) 1175 (51.1)
MANGANESE, mg 1.3	POTASSIUM, mg (mEq) 1800 (46.0)
COPPER, mg 1.3	CHLORIDE, mg (mEq) 1325 (37.4)

INGREDIENTS: CORN SYRUP SOLIDS, HIGH OLEIC SAFFLOWER OIL, COCONUT OIL, SODIUM CITRATE, SOY OIL, L-LEUCINE, L-LYSINE ACETATE, CALCIUM PHOSPHATE, L-VALINE, L-ISOLEUCINE, MAGNESIUM PHOSPHATE, POTASSIUM CHLORIDE, LESS THAN 2% OF: L-TYROSINE, L-THREONINE, L-PHENYLALANINE, SILICON DIOXIDE, DATEM, POTASSIUM CITRATE, POTASSIUM PHOSPHATE, L-CYSTINE DIHYDROCHLORIDE, L-HISTIDINE, L-METHIONINE, L-TRYPTOPHAN, L-CARNITINE, CALCIUM CARBONATE, ASCORBIC ACID, TAURINE, CHOLINE CHLORIDE, m-INOSITOL, FERROUS SULFATE, ZINC SULFATE, NIACINAMIDE, di-ALPHA-TOCOPHERYL ACETATE, CALCIUM PANTOTHENATE, ASCORBYL PALMITATE, MIXED TOCOPHEROLS, CUPRIC SULFATE, MANGANESE SULFATE, THIAMINE CHLORIDE HYDROCHLORIDE, RIBOFLAVIN, VITAMIN A PALMITATE, PYRIDOXINE HYDROCHLORIDE, FOLIC ACID, CHROMIUM CHLORIDE, POTASSIUM IODIDE, BETA-CAROTENE, BIOTIN, SODIUM SELENATE, PHYLOQUINONE, SODIUM MOLYBDATE, VITAMIN D₃ AND CYANOCOBALAMIN.

Abbott Nutrition
Abbott Laboratories
Columbus, Ohio 43219-3034 USA

USE ONLY AS DIRECTED BY A PHYSICIAN
Directions for Preparation and Use

Depending on specific needs of each individual, preparation will vary as prescribed by physician. Follow physician's instructions carefully.

1 Wash your hands, surfaces and utensils

2 Add prescribed amount of Cyclinex®-2 powder (and other ingredients if recommended)

3 Shake well for 10-15 seconds; if using a blender, mix no more than 5 seconds

Pour prescribed amount of water into clean container

Pour mixture into clean feeding cup or container; cap

Serve chilled. Once feeding begins, use within 1 hour or discard.

Storage Once mixed, store container in refrigerator and use within 24 hours. Store unopened or opened can at room temperature; avoid extreme temperatures. Use opened can contents within 1 month.

Warning This medical food should not be heated or used in cooking.

USE BY DATE ON BOTTOM OF CAN

Helpful Hints


- Add sweetened drink crystals to enhance flavor
- Mix Cyclinex-2 with fruit to make a smoothie
- Add chocolate or strawberry syrup
- Freeze flavored mixture in slushies

Mixing Guide

Approximate weights for unpacked, level, dry U.S. standard household measures for powder

1 Tbsp 8 g	1/2 Cup 60 g
1/4 Cup 30 g	1 Cup 120 g
1/3 Cup 40 g	

FOR MOST ACCURATE RESULTS, CYCLINEX-2 SHOULD BE WEIGHED ON A SCALE THAT READS IN GRAMS.


An FSSAI Initiative
This is neither an infant milk substitute nor an infant food.
Manufactured by and Country of Origin: Abbott Laboratories, 901 North Centerville Road, Sturgis, MI 49091, USA
Imported and Marketed by: Abbott Healthcare Pvt. Ltd., Regd. Office, 4, Corporate Park, Sion - Trombay Road, Mumbai - 400 071
Lic. No. 10012022000149

For product related queries, contact Customer Care Officer at Marketed by address or call 1800 266 0448 (Toll free) or email: webmaster.in@abbott.com

FOOD FOR SPECIAL MEDICAL PURPOSE
(To be taken under medical supervision)
Mfg. Dates: XX.XXX.XXXX
Expiry Dates: XX.XXX.XXXX
Batch No.: XXXXXXXXXX
NIP No.: XXXXX
(Inclusive of all taxes)
Lot No.: XXXXXXXXXX
Commodity No.: XXXXXXXXXX

Abbott Nutrition	51146-14.1-L-C0010-CY2-S	TURN OVERPRINT PREVIEW ON TO DISPLAY CORRECTLY PLEASE CONTACT LABELING SPECIALIST FOR INSTRUCTIONS
PROCESS BLACK	<input type="checkbox"/>	<input checked="" type="checkbox"/> VARNISH
PMS 360 CV GREEN	<input type="checkbox"/>	<input type="checkbox"/>
<input type="checkbox"/>	<input type="checkbox"/>	<input type="checkbox"/>
<input type="checkbox"/>	<input type="checkbox"/>	<input type="checkbox"/>
PROOF:	<input checked="" type="checkbox"/> EPSON	<input checked="" type="checkbox"/> APPROVED*
	<input type="checkbox"/> KODAK	<input type="checkbox"/> DISAPPROVED
PRINTER: CENVOE		
CAD: PK100987 REV D	GS: GL0370	
PREV. COMMODITY: 40416	*Generic Specification	

SIGNATURE

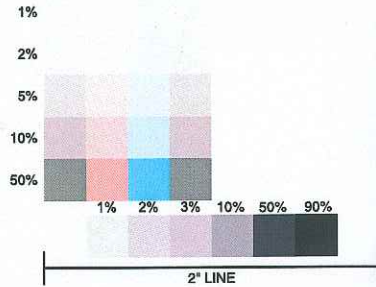
*Approved proof is accurate for copy, size, upc, and process builds. Match spot color(s) to approved ink drawdown(s) if applicable.

last modified : 2/18/08 6:31 AM

PACKAGE DESIGN APPROVAL

FUNCTION	DATE	SIGNATURE
PACKAGING		
PRODUCT DEVL.		
REG. COMPLIANCE		
LEGAL		

STEVENSON
THE COLOR COMPANY



08-1324 TYREX-1 14.1 OZ #31047

File Name :A1324Y31047



USE BY DATE ON BOTTOM OF CAN • ADD WATER BEFORE FEEDING
INGREDIENTS: CORN SYRUP SOLIDS, HIGH OLEIC SAFFLOWER OIL, COCONUT OIL, SOY OIL, L-LEUCINE, L-PROLINE, L-LYSINE ACETATE, CALCIUM PHOSPHATE, L-ARGININE, DATUM (AN EMULSIFIER), L-GLUTAMINE, L-VALINE, L-ISOLEUCINE, L-ALANINE, POTASSIUM PHOSPHATE, GLYCINE, L-ASPARAGINE, L-SERINE, L-THREONINE, SODIUM CITRATE, POTASSIUM CITRATE, MAGNESIUM CHLORIDE, L-HISTIDINE, L-METHIONINE, L-GLUTAMIC ACID, CALCIUM CARBONATE, L-CYSTINE DIHYDROCHLORIDE, ASCORBIC ACID, L-TRYPTOPHAN, L-ASPARTIC ACID, CHOLINE CHLORIDE, TAURINE, m-INOSITOL, FERROUS SULFATE, ZINC SULFATE, ASCORBYL PALMITATE, L-CARNITINE, dl-ALPHA-TOCOPHERYL ACETATE, NIACINAMIDE, SODIUM CHLORIDE, MIXED TOCOPHEROLS, CALCIUM PANTOTHENATE, CUPRIC SULFATE, THIAMINE CHLORIDE HYDROCHLORIDE, VITAMIN A PALMITATE, MANGANESE SULFATE, RIBOFLAVIN, PYRIDOXINE HYDROCHLORIDE, FOLIC ACID, BETA-CAROTENE, POTASSIUM IODIDE, BIOTIN, PHYLLOQUINONE, SODIUM SELENATE, CHROMIUM CHLORIDE, SODIUM MOLYBDATE, VITAMIN D₃ AND CYANOCOBALAMIN.

NUTRIENTS:	PER 100 g POWDER	PER 100 Cal	PER 100 g POWDER	PER 100 Cal
Protein Equivalent, g	15.0	3.1	Linoleic Acid, mg	3500
Fat, g	21.7	4.5	Linolenic Acid, mg	350
Carbohydrate, g	53.0	11.0	L-Carnitine, mg	20
			Calories	480
VITAMINS:				
Vitamin A, IU (mcg RE)	1400 (420)	292 (87.5)	Niacin, mcg (mg NE)	10000 (12.8)
Vitamin D, IU (mcg)	300 (7.5)	63 (1.6)	Folic Acid (Folacin), mcg	230
Vitamin E, IU (mg α-TE)	15 (10.1)	3 (2.1)	Pantothenic Acid, mcg	6900
Vitamin K, mcg	50	10.4	Biotin, mcg	65
Thiamin (Vit. B ₁), mg	1900	396	Vitamin C (Ascorbic Acid), mg	50
Riboflavin (Vit. B ₂), mg	900	188	Choline, mg	80
Vitamin B ₆ , mcg	750	159	Inositol, mg	40
Vitamin B ₁₂ , mcg	4.9	1.0		
MINERALS:				
Calcium, mg	575	120	Iodine, mcg	65
Phosphorus, mg	400	83	Selenium, mcg	20
Magnesium, mg	50	10	Chromium, mcg	11
Iron, mg	9	1.9	Molybdenum, mcg	12
Zinc, mg	8	1.7	Sodium, mg (mEq)	190 (8.3)
Manganese, mcg	500	104	Potassium, mg (mEq)	675 (17.3)
Copper, mcg	1100	229	Chloride, mg (mEq)	325 (9.2)

USE ONLY AS DIRECTED BY PHYSICIAN

Directions for Preparation and Use

Your baby's health depends on carefully following these easy directions. Proper hygiene, handling, and storage are important when preparing infant formula. Failure to follow these directions could result in severe harm. Powdered infant formulas are not sterile and should not be fed to premature infants or infants who might have immune problems unless directed by your baby's doctor. Consult your baby's doctor about the appropriate formula for your baby; the need to use cooled, boiled water for mixing; and the need to boil utensils, bottles and nipples in water before use.

To Prepare a 24-Hour Supply:

- Wash your hands, surfaces, and utensils.
- Pour prescribed amount of water into a clean container.
- Add prescribed amount of Tyrex-1 powder (and other ingredients if recommended).
- Shake in a tightly closed container for 10-15 seconds. If using a blender, mix no more than 5 seconds.
- Pour mixture into clean feeding bottles or container; cap and store in refrigerator until used.
- Shake well before feeding; if warmed, test temperature.
- Once feeding begins, use within 1 hour or discard.
- To meet the nutrient needs of the infant or child, infant formula, breast milk or additional food choices must be given to supply protein, phenylalanine, and tyrosine requirements. These may be added to Tyrex-1 or prepared separately as instructed. Depending on the specific needs of each patient, preparation will vary as prescribed by physician.

Approximate weights for unpacked, level, dry US standard household measures for powder
1 Tbsp 8 g 1/2 Cup 60 g
1/4 Cup 30 g 1 Cup 120 g
1/3 Cup 40 g
FOR MOST ACCURATE RESULTS, TYREX-1 SHOULD BE WEIGHED ON SCALE THAT READS IN GRAMS

Storage: Store prepared individual feeding bottles or closed container of the 24-hour supply in refrigerator at 35-40° F (2-4° C). For cup feeding, shake well and pour mixture into cup and serve immediately. Use within 24 hours after mixing.

Store unopened cans at room temperature; avoid extreme temperatures. Cover opened can with resealable lid and store in cool, dry area (not in refrigerator). Use contents within 1 month.

Warning: Do not boil mixture or use terminal sterilization. Never use a microwave oven to prepare or warm mixture. Serious burns can result.

ROSS PRODUCTS DIVISION
ABBOTT LABORATORIES
COLUMBUS, OHIO 43215-1724 USA

© 1998, 2006 Abbott
#51128 31047 FAN 8070-03
U.S. Patent 5,221,545



An FSSAI initiative
This is neither an infant milk substitute nor an infant food.
Manufactured by and Country of Origin:
Abbott Laboratories, 901 North
Centerville Road, Sturgis, MI 49091, USA
Imported and Marketed by:
Abbott Healthcare Pvt. Ltd., Regd.
Office: 4, Corporate Park, Sion - Trombay
Road, Mumbai - 400 071
Lic. No. 100120220000149

For product related queries, contact
Customer Care Officer at Mumbai
by address or call 1800 266 0448
(toll free) or
email: webmasterindia@abbott.com
FOOD FOR SPECIAL MEDICAL
PURPOSE
(To be taken under medical advice)
Mfg. Date: XX.XX.XXXX
Exp. Date: XX.XX.XXXX
Batch No.: XXXXXXXX
MRP ₹: XXXXX/-
(Inclusive of all taxes)
Lic. No. XXX
Commodity No. XXXXXXXX

ROSS
METABOLICS

Tyrex-1

Amino Acid-Modified
Medical Food With Iron

PHENYLALANINE- AND TYROSINE-FREE

For nutrition support of infants and toddlers
with tyrosinemia types I, II and III

PRECAUTIONS:

Not intended as a sole source of nutrition. Give only to infants and toddlers with proven tyrosinemia types I, II, or III who are under medical supervision. Must be supplemented with protein and fluid in prescribed amounts to completely meet phenylalanine, tyrosine, and water requirements.

NOT FOR PARENTERAL USE

14.1 OZ (400 g)

Powder

ROSS INTEGRATED MARKETING DEPARTMENT

STOCK# 51128 COMM# 31047 FAN# 8070-03 S

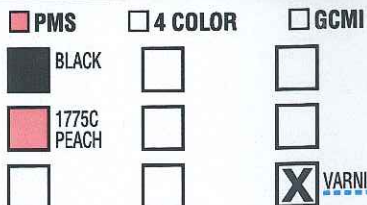
CAD DWG: PK17974 REV G GENERIC SPEC: GL0018

SOFTWARE/VERSION: ADOBE ILLUSTRATOR CS

ART VENDOR: 2 SHEA

THIS PRINTOUT IS 100% OF ACTUAL SIZE

COLORS



PROOF REQUEST

<input type="checkbox"/> NEW	<input type="checkbox"/> REVISED	<input type="checkbox"/> REMOTE PROOF	<input type="checkbox"/> REMOTE PROOF W/FULL CHROME
PRINTER: CENVEO		PREF. CORR. 22788	
FILE PREPARATION BY: STEVENSON THE COLOR COMPANY			
535 Wilmer Avenue, Cincinnati, OH 45226-1861 (513)321-7500 Fax: (513)321-7502 ISDN: (513)321-2538			
JOB NUMBER: 08-1324	DATE COMPLETED: 02/15/2008		
PRE-SEP APPROV: XXXXX	FINAL FILE APPROV: XXXXX	FINAL FILM APPROV: XXXXX	
UPC/SCC CODES APRVL MO			

SIGNATURE

DATE

PROOFREADER (1)	
PROOFREADER (2)	
PROJECT COORD	
SIZE, COPY CHLON, UPC APPROVED	
ENDORSED PROOF APPROVED BY LABELING	
NOT APPROVED	

Ensuring visual excellence.

Prepress/Assembly

Job Description: Tyrex-2 14.1oz #C0017

Job Number: 13.5565

File Name: A5565DC0017

Final Artwork Size: 12.8125" x 4.375"

Operator: MO

Customer: Abbott Nutrition

Vendor: XXXXXX

Printer: Cenvoe Toledo

Last Modified: 9/25/13 6:33 AM

Our Stevenson Quality Assurance Team has thoroughly reviewed this file. Upon receipt, please check this file carefully. Our client and its suppliers are responsible for all content, color, legal and regulatory text and product information. Stevenson will, at our cost, replace our product if the work is found to be incorrect at this stage. Should an error be found subsequent to client/supplier approval, Stevenson shall be responsible only for the replacement of the artwork containing the error, and in addition, shall not be held liable for any consequential changes, charges or losses incurred as a result of any error.

VERSION 1

Workflow: EFL_Abbott_SWOP_Offset

Black PANTONE 1775 C VARNISH Die

1% 25% 50% 75% 100% 2% 50% 100% 2% 50% 100% 2% 50% 100%

Stevenson Color, Inc. | 535 Wilmer Avenue Cincinnati, Ohio 45226 | Telephone: 513.321.7500 Fax: 513.321.7502 | stevensoncolor.com

100mm LINE

1/8

PRINT LIMIT

1/8

12 3/8 VARNISHED AREA

4 7/8

1/8 PRINT LIMIT

4 3/8

12 13/16

3/16 PRINT LIMIT

7/16 GLUE FLAP

NUTRIENTS

PER 100 g POWDER	PER 100 g POWDER
PROTEIN EQUIVALENT, g 30.0	LINOLENIC ACID, mg 225
FAT, g 14.0	L-CARNITINE, mg 40
CARBOHYDRATE, g 35.0	CALORIES 410
LINOLEIC ACID, mg 2200	

VITAMINS

VITAMIN A, IU (mcg RE) 2200 (660)	NIACIN, mg (mg NE) 16 (21.7)
VITAMIN D, IU (mcg) 300 (7.5)	FOLIC ACID (FOLACIN), mcg 450
VITAMIN E, IU (mg α-TE) 18 (12.1)	PANTOTHENIC ACID, mg 8.0
VITAMIN K, mcg 60	BIOTIN, mcg 100
VITAMIN B ₁ (thiamine), mg 3.3	VITAMIN C (ASCORBIC ACID), mg 60
RIBOFLAVIN (VIT. B ₂), mg 1.8	CHOLINE, mg 100
VITAMIN B ₆ , mg 1.3	INOSITOL, mg 70
VITAMIN B ₁₂ , mcg 5.0	

MINERALS

CALCIUM, mg 880	IODINE, mcg 100
PHOSPHORUS, mg 760	SELENIUM, mcg 35
MAGNESIUM, mg 225	CHROMIUM, mcg 27
IRON, mg 13	MOLYBDENUM, mcg 30
ZINC, mg 13	SODIUM, mg (mEq) 880 (38.3)
MANGANESE, mg 0.8	POTASSIUM, mg (mEq) 1370 (35.0)
COPPER, mg 1.0	CHLORIDE, mg (mEq) 940 (26.5)

INGREDIENTS: CORN SYRUP SOLIDS, HIGH OLEIC SAFFLOWER OIL, COCONUT OIL, SODIUM CITRATE, SOY OIL, L-LEUCINE, L-PROLINE, L-LYSINE ACETATE, L-ARGININE, L-GLUTAMINE, CALCIUM PHOSPHATE, L-VALINE, L-ISOLEUCINE, L-ALANINE, GLYCINE, MAGNESIUM PHOSPHATE, POTASSIUM CHLORIDE, LESS THAN 2% OF: L-ASPARAGINE, L-SERINE, L-THREONINE, SILICON DIOXIDE, DATEM, L-HISTIDINE, POTASSIUM CITRATE, POTASSIUM PHOSPHATE, L-METHIONINE, L-GLUTAMIC ACID, L-CYSTINE DIHYDROCHLORIDE, L-TRYPTOPHAN, L-ASPARTIC ACID, CALCIUM CARBONATE, ASCORBIC ACID, TAURINE, CHOLINE CHLORIDE, m-INOSITOL, FERROUS SULFATE, ZINC SULFATE, L-CARNITINE, NIACINAMIDE, dl-ALPHA-TOCOPHERYL ACETATE, CALCIUM PANTOTHENATE, ASCORBYL PALMITATE, MIXED TOCOPHEROLS, CUPRIC SULFATE, MANGANESE SULFATE, THIAMINE CHLORIDE HYDROCHLORIDE, RIBOFLAVIN, VITAMIN A PALMITATE, PYRIDOXINE HYDROCHLORIDE, FOLIC ACID, CHROMIUM CHLORIDE, POTASSIUM IODIDE, BETA-CAROTENE, BIOTIN, SODIUM SELENATE, PHYLOQUINONE, SODIUM MOLYBDATE, VITAMIN D₃ AND CYANOCOBALAMIN.

Abbott Nutrition, Abbott Laboratories
Columbus, Ohio 43219-3034 USA

USE ONLY AS DIRECTED BY A PHYSICIAN
Directions for Preparation and Use

Depending on specific needs of each individual, preparation will vary as prescribed by physician. Follow physician's instructions carefully.

- Wash your hands, surfaces and utensils. Pour prescribed amount of water into clean container.
- Add prescribed amount of Tyrex-2 powder (and other ingredients if recommended).
- Shake well for 10-15 seconds; if using a blender, mix no more than 5 seconds. Pour mixture into clean feeding cup or container; cap.

Storage: Serve chilled. Once feeding begins, use within 1 hour or discard. Once mixed, store container in refrigerator and use within 24 hours. Store unopened or opened can at room temperature; avoid extreme temperatures. Use opened can contents within 1 month.

Warning: This medical food should not be heated or used in cooking.

Helpful Hints:

- Add sweetened drink crystals to enhance flavor.
- Mix Tyrex-2 with fruit to make a smoothie.
- Add chocolate or strawberry syrup.
- Freeze flavored mixture in slushies.

Mixing Guide

Approximate weights for unpacked, level, dry U.S. standard household measures for powder

1 Tbsp 8 g	1/2 Cup 60 g
1/4 Cup 30 g	1 Cup 120 g
1/3 Cup 40 g	

FOR MOST ACCURATE RESULTS, TYREX-2 SHOULD BE WEIGHED ON A SCALE THAT READS IN GRAMS.

USE BY DATE ON BOTTOM OF CAN

Helpful Hints:

- Add sweetened drink crystals to enhance flavor.
- Mix Tyrex-2 with fruit to make a smoothie.
- Add chocolate or strawberry syrup.
- Freeze flavored mixture in slushies.

Food for Special Medical Purposes

An FSSAI initiative. This is neither an infant milk substitute nor an infant food. Manufactured by and Country of Origin: Abbott Laboratories, 901 North Centerville Road, Sturge, MI 49091, USA. Imported and Marketed by: Abbott Healthcare Pvt. Ltd., Regd. Office, 4, Corporate Park, Sion - Trombay Road, Mumbai - 400 071.

For product related queries, contact Customer Care Officer at Manufactured by address or call 1800 266 0448 (toll free) or email: webmaster@abbott.com

FOOD FOR SPECIAL MEDICAL PURPOSE (To be taken under medical advice)
Mfg. Date: XX.XXX.XXXX
Exp. Date: XX.XXX.XXXX
Batch No: XXXXXXXXXX
MPP #: XXXXXX-
(Inclusive of all taxes)

Lic. No. 10912022000149

Abbott

Tyrex®-2

Amino Acid-Modified Medical Food

PHENYLALANINE- AND TYROSINE-FREE

For nutrition support of children and adults with tyrosinemia types I, II and III

PRECAUTIONS:
Not intended as a sole source of nutrition. Give only to children and adults with proven tyrosinemia I, II, or III who are under medical supervision. Must be supplemented with protein and fluid in prescribed amounts to completely meet phenylalanine, tyrosine and water requirements.

NOT FOR IV USE
NOT FOR INFANTS UNDER 1 YEAR OF AGE

NET WT. 14.1 OZ (400 g) Powder

Abbott Nutrition

51126-14.1-L-C0017-TX2-S

PROCESS BLACK

PMS 1775 CV PEACH

V VARNISH

PROOF: EPSON KODAK

PRINTER: CENVOE

CAD: PK100987 REV D

PREV. COMMODITY: 40450

GS: GL0370

*Generic Specification

SIGNATURE

*Approved proof is accurate for copy, size, upc, and process builds. Match spot color(s) to approved ink drawdown(s) if applicable.

NUTRIENTS	PER 100 g POWDER	PER 100 g POWDER
PROTEIN, g.....	73	WATER, g..... 4.0
FAT, g.....	1.4	LINOLEIC ACID, mg..... 0.0
CARBOHYDRATE, g.....	2.0	CALORIES..... 313
VITAMINS		
VITAMIN A, IU.....	6740	NIACIN, mcg..... 24000
VITAMIN D, IU.....	1000	FOLIC ACID (FOLACIN), mcg..... 320
VITAMIN E, IU.....	67	PANTOTHENIC ACID, mcg..... 10100
VITAMIN K, mcg.....	90	BIOTIN, mcg..... 100
THIAMIN (Vit. B ₁), mcg.....	2240	VITAMIN C
RIBOFLAVIN (Vit. B ₂), mcg.....	2020	(ASCORBIC ACID), mg..... 200
VITAMIN B ₆ , mcg.....	1350	CHOLINE, mg..... 335
VITAMIN B ₁₂ , mcg.....	5.6	INOSITOL, mg..... 105
MINERALS		
CALCIUM, mg.....	2400	COPPER, mcg..... 2100
PHOSPHORUS, mg.....	1700	IODINE, mcg..... 335
MAGNESIUM, mg.....	200	SELENIUM, mcg..... 46
IRON, mg.....	40	SODIUM, mg (mEq)..... 1200 (52)
ZINC, mg.....	17	POTASSIUM, mg (mEq)..... 3300 (84)
MANGANESE, mcg.....	200	CHLORIDE, mg (mEq)..... 2300 (65)
INGREDIENTS: SODIUM CASEINATE, CALCIUM PHOSPHATE, POTASSIUM CITRATE, POTASSIUM CHLORIDE; LESS THAN 2% OF: MAGNESIUM CHLORIDE, ASCORBIC ACID, COCONUT OIL, CHOLINE CHLORIDE, FERROUS SULFATE, TAURINE, m-INOSITOL, L-METHIONINE, d-ALPHA-TOCOPHERYL ACETATE, ZINC SULFATE, L-CARNITINE, NIACINAMIDE, CALCIUM PANTOTHENATE, VITAMIN A PALMITATE, COPPER SULFATE, THIAMINE HYDROCHLORIDE, RIBOFLAVIN, PYRIDOXINE HYDROCHLORIDE, FOLIC ACID, MANGANESE SULFATE, POTASSIUM IODIDE, PHYLOQUINONE, BIOTIN, SODIUM SELENATE, VITAMIN D ₃ , VITAMIN B ₁₂ , SALT AND CALCIUM CARBONATE.		
CONTAINS MILK INGREDIENTS.		

Abbott Nutrition
Abbott Laboratories
Columbus, Ohio 43219-3034 USA

USE ONLY AS DIRECTED BY A PHYSICIAN Directions for Preparation and Use

Depending on specific needs of each individual, preparation will vary as prescribed by physician. Failure to follow these instructions could result in harm. If feeding an infant, ask your baby's doctor if you need to use cooled boiled water for mixing and boil (sterilize) bottles, nipples and rings before use.

- 1 Wash your hands, surfaces and utensils.
- 2 Pour a small amount of the prescribed liquid into a clean container or blender.
- 3 Add prescribed amount of ProViMin® powder and mix or blend on low speed to make a smooth paste.
- 4 Gradually add remaining liquid (and other ingredients if recommended) to the mixture while stirring or blending. Stir or blend on low speed until well blended.
- 5 Pour mixture into clean feeding container; cap.
- 6 Shake well before feeding.

Once feeding begins, use within 1 hour or discard

Storage Once mixed, store container in refrigerator and use within 24 hours. Store unopened or opened can at room temperature; avoid extreme temperatures. Use opened can contents within 1 month.

Warning Powdered formulas are not sterile and should not be fed to premature infants or infants who might have immune problems unless directed and supervised by your baby's doctor. Never use a microwave to warm mixture. Serious burns can result.

USE BY DATE ON BOTTOM OF CAN

Mixing Guide

Approximate weights for unpacked, level, dry U.S. standard household measures for powder

- 1 Tbsp = approx. 2.9 g ProViMin
- 1/4 Cup = approx. 11.0 g ProViMin
- 1/2 Cup = approx. 20.0 g ProViMin
- 2/3 Cup = approx. 30.0 g ProViMin
- 1 Cup = approx. 44.0 g ProViMin

FOR MOST ACCURATE RESULTS, PROVIMIN SHOULD BE WEIGHED ON A SCALE THAT READS IN GRAMS.



An FSSAI initiative
This is neither an infant milk substitute nor an infant food.
Manufactured by and Country of Origin: Abbott Laboratories, 901 North Centerville Road, Sturgis, MI 49091, USA
Imported and Marketed by: Abbott Healthcare Pvt. Ltd., Regd. Office, 4, Corporate Park, Sion - Trombay Road, Mumbai - 400 071
Lic. No. 100120220000149



For product related queries, contact Customer Care Officer at Marketed by address or call 1800 266 0448 (Toll free) or email: webmasterindia@abbott.com
For 3-Hydroxy Long Chain Acl-CoA Dehydrogenase Deficiency FOOD FOR SPECIAL MEDICAL PURPOSE
(To be taken under medical advice)
Mfg. Date: XX.XXXX.XXXX
Expiry Date: XX.XXXX.XXXX
Batch No.: XXXXXXXXXX
MRP ₹: XXXXX/- (Inclusive of all taxes)
List No. XXXX
Commodity No. XXXXXXXXXX



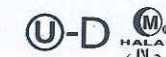
ProViMin® Protein-Vitamin-Mineral Module With Iron

For nutrition support of individuals who require a formula modified in carbohydrate, fat and/or increased protein

PRECAUTIONS:

This product does not supply adequate carbohydrate, fat or linoleic acid. These nutrients should be added to supply the requirements of the individual.

USE ONLY UNDER MEDICAL SUPERVISION.
NOT FOR IV USE



NET WT. 5.3 OZ (150 g)

Powder



RCF[®]

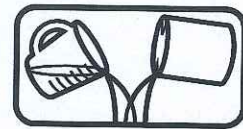
No Added Carbohydrate SOY INFANT FORMULA BASE WITH IRON

RCF is intended for persons who are unable to tolerate the type or amount of carbohydrate in milk or infant formulas. This product has no added carbohydrate.

Ketogenic Diet: Added carbohydrate may not be recommended. Follow physician's instructions.

Concentrated Liquid

Add water and other ingredients as directed by physician before feeding.



13 FL OZ (384 mL)



U-DE

NUTRIENTS

	PER 100 mL UNDILUTED*	PER 100 CALORIES (5 FL OZ AS PREPARED)		PER 100 mL UNDILUTED*	PER 100 CALORIES (5 FL OZ AS PREPARED)
PROTEIN, g	4.0	3.0	WATER, g	88	133
FAT, g	7.2	5.3	LINOLEIC ACID, mg	1352	1000
CARBOHYDRATE, g	0.07	0.1			
VITAMINS					
VITAMIN A, IU	405	300	NIACIN, mcg	1800	1350
VITAMIN D, IU	81	60	FOLIC ACID (FOLACIN), mcg	20	15
VITAMIN E, IU	2.0	1.5	PANTOTHENIC ACID, mcg	1000	750
VITAMIN K, mcg	15	11	BIOTIN, mcg	6.1	4.5
THIAMIN (VIT. B ₁), mcg	80	60	VITAMIN C		
RIBOFLAVIN (VIT. B ₂), mcg	120	90	(ASCORBIC ACID), mg	12	9
VITAMIN B ₆ , mcg	80	60	CHOLINE, mg	15.7	12
VITAMIN B ₁₂ , mcg	0.6	0.4	INOSITOL, mg	6.5	5
MINERALS					
CALCIUM, mg	140	105	COPPER, mcg	100	75
PHOSPHORUS, mg	100	75	IODINE, mcg	20.3	15
MAGNESIUM, mg	10.0	7.5	SELENIUM, mcg	2.4	1.8
IRON, mg	2.4	1.8	SODIUM, mg (mEq)	59.1 (2.6)	44 (1.9)
ZINC, mg	1.0	0.75	POTASSIUM, mg (mEq)	146 (3.7)	108 (2.8)
MANGANESE, mcg	34	25	CHLORIDE, mg (mEq)	83 (2.3)	62 (1.8)

* 81 CALORIES
† 54 g OF CARBOHYDRATE, 12 FL OZ WATER AND 13 FL OZ OF RCF; YIELDS 26 FL OZ.

INGREDIENTS: WATER (88%), SOY PROTEIN ISOLATE (5%), HIGH OLEIC SAFFLOWER OIL (3%), SOY OIL (2%), COCONUT OIL (2%); **LESS THAN 1% OF:** CALCIUM PHOSPHATE, POTASSIUM CITRATE, POTASSIUM CHLORIDE, MAGNESIUM CHLORIDE, MONOGLYCERIDES, SOY LECITHIN, CARRAGEENAN, SALT, L-METHIONINE, ASCORBIC ACID, POTASSIUM HYDROXIDE, CHOLINE CHLORIDE, TAURINE, m-INOSITOL, FERROUS SULFATE, ZINC SULFATE, L-CARNITINE, NIACINAMIDE, d-ALPHA-TOCOPHERYL ACETATE, CALCIUM PANTOTHENATE, CUPRIC SULFATE, THIAMINE CHLORIDE HYDROCHLORIDE, VITAMIN A PALMITATE, RIBOFLAVIN, PYRIDOXINE HYDROCHLORIDE, FOLIC ACID, POTASSIUM IODIDE, PHYLOQUINONE, BIOTIN, BETA-CAROTENE, SODIUM SELENATE, VITAMIN D₃ AND CYANOCOBALAMIN.
CONTAINS SOY INGREDIENTS.

Abbott Nutrition, Abbott Laboratories, Columbus, Ohio 43219-3034 USA

USE ONLY AS DIRECTED BY A PHYSICIAN

Directions for Preparation and Use:

Your baby's health depends on carefully following these directions. Failure to follow these directions could result in severe harm. Ask your baby's physician if you need to boil (sterilize) bottles, nipples and rings before use.

For 20 Cal/fl oz Formula:

Use the type and amount of carbohydrate specified by your physician (see table below).

- Dissolve carbohydrate in 12 fl oz of water, cover and bring to boil. Keep covered; allow to cool.
- Rinse can lid and shake **very well**. Open with clean punch-type opener.
- Add RCF to cooled carbohydrate solution prepared in step 1. Mix and pour into bottles (or cup).
- Once feeding begins, use within 1 hour or discard.

For 54 g of carbohydrate, add one of the following:

Table Sugar (Sucrose)	4 Level Tbsp
Fructose Powder	4 Level Tbsp
Dextrose Powder (Hydrous)	6 Level Tbsp
Polycose [®] Powder	9 Level Tbsp

Storage: Cover opened can, refrigerate and use within 48 hours. Store prepared formula in the refrigerator and **feed to baby within 48 hours**. Store unopened product at room temperature; avoid extreme temperatures.

Warning: Never use a microwave to prepare or warm formula. Serious burns can result.

USE BY DATE ON END OF CAN



An FSSAI initiative
This is neither an infant milk substitute nor an infant food.

Manufactured by and Country of Origin:
Abbott Laboratories, 901 North

Centerville Road, Sturgis, MI 49091, USA

Imported and Marketed by:

Abbott Healthcare Pvt. Ltd., Regd.

Office, 4, Corporate Park, Sion - Trombay

Road, Mumbai - 400 071

Lic. No. 100120220000149



For product related queries, contact Customer Care Officer at Marketed by address or call 1800 266 0448

(Toll free) or email: webmasterindia@abbott.com

For Glucose Transport Defect, Pyruvate

Dehydrogenase Complex Deficiency

FOOD FOR SPECIAL MEDICAL

PURPOSE

(To be taken under medical advice)

Mfg. Date: XXXXXX XXXX

Expiry Date: XXXXXX XXXX

Batch No.: XXXXXX XXXX

MRP ₹: XXXXX-

(Inclusive of all taxes)

Lic. No. XXXX

Commodity No. XXXXXXXXXX

ABBOTT

STOCK# 00108 COMM# 42618 FAN# 9123-10 A

CAD DWG: PK112698 REV B GENERIC SPEC: GL0431

SOFTWARE/VERSION: ADOBE ILLUSTRATOR CS5

ART VENDOR: RICE

SHIPPERS: ☐ KRAFT ☐ MOTTLED WHITE

THIS PRINTOUT IS 100% OF ACTUAL SIZE

COLORS

<input checked="" type="checkbox"/> PMS	<input type="checkbox"/> 4 COLOR	<input type="checkbox"/> GCM1
<input checked="" type="checkbox"/> BLACK	<input type="checkbox"/>	<input type="checkbox"/>
<input checked="" type="checkbox"/> 464 C BROWN	<input type="checkbox"/>	<input type="checkbox"/>
<input type="checkbox"/>	<input type="checkbox"/>	<input checked="" type="checkbox"/> VARNISH

PROOF REQUEST

☐ NEW ☒ REVISED ☐ PDF INCLUDE: ☒ EPSON ☐ KODAK

PRINTER GRAPHIC PACKAGING PREVIOUS COMM. NEW

FILE PREPARATION BY:

JOB NUMBER XXXXXX DATE COMPLETED 00/00/2009 UPC/SCC APPROVAL XX

THIS CERTIFIES THAT CONTRACT PROOF WAS MADE USING APPROVED .K FILE SIGNED BY ABBOTT.

PROOF APPROVAL

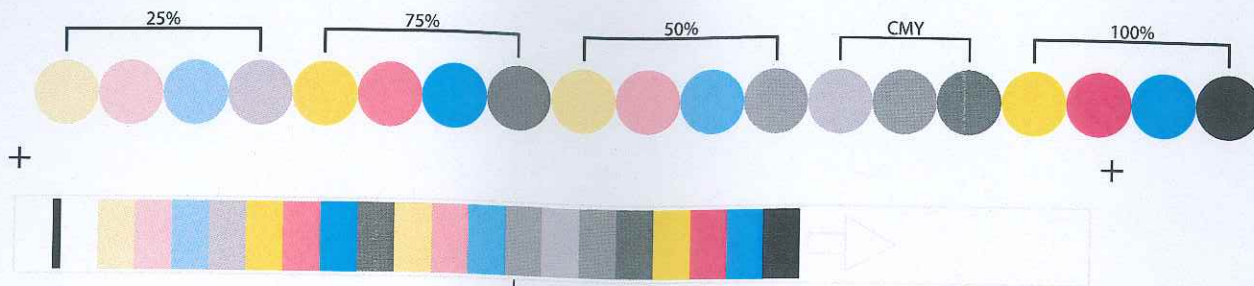
PROOF IS: ☐ APPROVED Copy, Size, UPC ☐ NOT APPROVED

CONTRACT COLOR ☐ Approved for Color ☐ Approved Process Colors Only. Match PMS spot colors to signed ink drawdowns. ☐ Approved for Color Breaks Only. Match color to approved printed standards.

ENDORSED PROOF APPROVED BY LABELING

APPROVED

By Oana at 11:45 am, Jun 18, 2012



ملاحظة هامة: سيميلاك إيليكيير هو المنتج الأمثل للأطفال الذين يعانون من حساسية اللاكتوز أو عدم تحمل اللاكتوز. لا يوجد حالات شبيهة بحساسية سيميلاك إيليكيير.

تركيبة خاصة لتزويد الطفل على أفضل حال من الحساسية اللاكتوزية.

قد تكون مشاكل الحساسية لدى طفلك تحدياً خطيراً، خصوصاً سيميلاك إيليكيير. يمكن حمية متخصصة لحالات حساسية اللاكتوز الشديدة واضطرابات الجهاز الهضمي، ومتلازمة الأمعاء الدقيقة وحالات سوء الامتصاص وسوء هضم البروتين واختلال الجهاز الهضمي.

IMPORTANT NOTES: Breast milk is best for infants and is recommended for as long as possible during infancy except where special medical conditions exist. Similac EleCare is a nutritionally complete amino acid-based infant formula.

It can be a real challenge when your baby has difficulty feeding. Similac EleCare is specially formulated for the dietary management of severe food allergies, eosinophilic gastrointestinal disorders, short bowel syndrome, malabsorptive conditions, protein malabsorption and gastrointestinal tract impairment.

Similac EleCare is clinically shown to support growth when used as a primary source of nutrition.

Similac EleCare is hypoallergenic and benefits patients with severe protein allergies when an extensive hydrolyzed formula is not tolerated.

Similac EleCare is specifically formulated to meet the nutritional needs of infants who need an amino acid-based formula or who cannot tolerate infant protein.

Similac EleCare has a unique fat blend, including MCT oil for easy absorption.

Similac EleCare is a unique fat blend, including MCT oil for easy absorption.

DIRECTIONS FOR PREPARATION AND USE: Use as directed by your physician. Proper hygiene, handling, and storage are important when preparing infant formula. Failure to follow these instructions could result in severe harm. Powdered infant formulas are not sterile and should not be fed to premature infants or infants who might have immune problems unless directed and supervised by your baby's doctor.

1. Provide clean surface on which to prepare the formula.

2. Fill scoop, then scoop level with the straight edge of a bottle.

3. Fill the correct amount of water, previously boiled water into the sterilized feeding bottle.

4. Mix until completely dissolved. Test temperature and feed.

5. Add one scoop of Similac EleCare to each 90 mL of water in bottle.

6. Add one scoop of Similac EleCare to each 90 mL of water in bottle.

7. Add one scoop of Similac EleCare to each 90 mL of water in bottle.

8. Add one scoop of Similac EleCare to each 90 mL of water in bottle.

9. Add one scoop of Similac EleCare to each 90 mL of water in bottle.

10. Add one scoop of Similac EleCare to each 90 mL of water in bottle.

11. Add one scoop of Similac EleCare to each 90 mL of water in bottle.

12. Add one scoop of Similac EleCare to each 90 mL of water in bottle.

13. Add one scoop of Similac EleCare to each 90 mL of water in bottle.

14. Add one scoop of Similac EleCare to each 90 mL of water in bottle.

15. Add one scoop of Similac EleCare to each 90 mL of water in bottle.

16. Add one scoop of Similac EleCare to each 90 mL of water in bottle.

17. Add one scoop of Similac EleCare to each 90 mL of water in bottle.

18. Add one scoop of Similac EleCare to each 90 mL of water in bottle.

19. Add one scoop of Similac EleCare to each 90 mL of water in bottle.

20. Add one scoop of Similac EleCare to each 90 mL of water in bottle.

21. Add one scoop of Similac EleCare to each 90 mL of water in bottle.

22. Add one scoop of Similac EleCare to each 90 mL of water in bottle.

23. Add one scoop of Similac EleCare to each 90 mL of water in bottle.

24. Add one scoop of Similac EleCare to each 90 mL of water in bottle.

25. Add one scoop of Similac EleCare to each 90 mL of water in bottle.

26. Add one scoop of Similac EleCare to each 90 mL of water in bottle.

27. Add one scoop of Similac EleCare to each 90 mL of water in bottle.

28. Add one scoop of Similac EleCare to each 90 mL of water in bottle.

29. Add one scoop of Similac EleCare to each 90 mL of water in bottle.

30. Add one scoop of Similac EleCare to each 90 mL of water in bottle.

31. Add one scoop of Similac EleCare to each 90 mL of water in bottle.

32. Add one scoop of Similac EleCare to each 90 mL of water in bottle.

33. Add one scoop of Similac EleCare to each 90 mL of water in bottle.

34. Add one scoop of Similac EleCare to each 90 mL of water in bottle.

35. Add one scoop of Similac EleCare to each 90 mL of water in bottle.

36. Add one scoop of Similac EleCare to each 90 mL of water in bottle.

37. Add one scoop of Similac EleCare to each 90 mL of water in bottle.

38. Add one scoop of Similac EleCare to each 90 mL of water in bottle.

39. Add one scoop of Similac EleCare to each 90 mL of water in bottle.

40. Add one scoop of Similac EleCare to each 90 mL of water in bottle.

41. Add one scoop of Similac EleCare to each 90 mL of water in bottle.

42. Add one scoop of Similac EleCare to each 90 mL of water in bottle.

43. Add one scoop of Similac EleCare to each 90 mL of water in bottle.

44. Add one scoop of Similac EleCare to each 90 mL of water in bottle.

45. Add one scoop of Similac EleCare to each 90 mL of water in bottle.

46. Add one scoop of Similac EleCare to each 90 mL of water in bottle.

47. Add one scoop of Similac EleCare to each 90 mL of water in bottle.

48. Add one scoop of Similac EleCare to each 90 mL of water in bottle.

49. Add one scoop of Similac EleCare to each 90 mL of water in bottle.

50. Add one scoop of Similac EleCare to each 90 mL of water in bottle.

51. Add one scoop of Similac EleCare to each 90 mL of water in bottle.

52. Add one scoop of Similac EleCare to each 90 mL of water in bottle.

53. Add one scoop of Similac EleCare to each 90 mL of water in bottle.

54. Add one scoop of Similac EleCare to each 90 mL of water in bottle.

55. Add one scoop of Similac EleCare to each 90 mL of water in bottle.

56. Add one scoop of Similac EleCare to each 90 mL of water in bottle.

57. Add one scoop of Similac EleCare to each 90 mL of water in bottle.

58. Add one scoop of Similac EleCare to each 90 mL of water in bottle.

59. Add one scoop of Similac EleCare to each 90 mL of water in bottle.

60. Add one scoop of Similac EleCare to each 90 mL of water in bottle.

61. Add one scoop of Similac EleCare to each 90 mL of water in bottle.

62. Add one scoop of Similac EleCare to each 90 mL of water in bottle.

63. Add one scoop of Similac EleCare to each 90 mL of water in bottle.

64. Add one scoop of Similac EleCare to each 90 mL of water in bottle.

65. Add one scoop of Similac EleCare to each 90 mL of water in bottle.

66. Add one scoop of Similac EleCare to each 90 mL of water in bottle.

67. Add one scoop of Similac EleCare to each 90 mL of water in bottle.

68. Add one scoop of Similac EleCare to each 90 mL of water in bottle.

69. Add one scoop of Similac EleCare to each 90 mL of water in bottle.

70. Add one scoop of Similac EleCare to each 90 mL of water in bottle.

71. Add one scoop of Similac EleCare to each 90 mL of water in bottle.

72. Add one scoop of Similac EleCare to each 90 mL of water in bottle.

73. Add one scoop of Similac EleCare to each 90 mL of water in bottle.

74. Add one scoop of Similac EleCare to each 90 mL of water in bottle.

75. Add one scoop of Similac EleCare to each 90 mL of water in bottle.

76. Add one scoop of Similac EleCare to each 90 mL of water in bottle.

77. Add one scoop of Similac EleCare to each 90 mL of water in bottle.

78. Add one scoop of Similac EleCare to each 90 mL of water in bottle.

79. Add one scoop of Similac EleCare to each 90 mL of water in bottle.

80. Add one scoop of Similac EleCare to each 90 mL of water in bottle.

81. Add one scoop of Similac EleCare to each 90 mL of water in bottle.

82. Add one scoop of Similac EleCare to each 90 mL of water in bottle.

83. Add one scoop of Similac EleCare to each 90 mL of water in bottle.

84. Add one scoop of Similac EleCare to each 90 mL of water in bottle.

85. Add one scoop of Similac EleCare to each 90 mL of water in bottle.

86. Add one scoop of Similac EleCare to each 90 mL of water in bottle.

87. Add one scoop of Similac EleCare to each 90 mL of water in bottle.

88. Add one scoop of Similac EleCare to each 90 mL of water in bottle.

89. Add one scoop of Similac EleCare to each 90 mL of water in bottle.

90. Add one scoop of Similac EleCare to each 90 mL of water in bottle.

91. Add one scoop of Similac EleCare to each 90 mL of water in bottle.

92. Add one scoop of Similac EleCare to each 90 mL of water in bottle.

93. Add one scoop of Similac EleCare to each 90 mL of water in bottle.

94. Add one scoop of Similac EleCare to each 90 mL of water in bottle.

95. Add one scoop of Similac EleCare to each 90 mL of water in bottle.

96. Add one scoop of Similac EleCare to each 90 mL of water in bottle.

97. Add one scoop of Similac EleCare to each 90 mL of water in bottle.

98. Add one scoop of Similac EleCare to each 90 mL of water in bottle.

99. Add one scoop of Similac EleCare to each 90 mL of water in bottle.

100. Add one scoop of Similac EleCare to each 90 mL of water in bottle.

ANALYSIS	UNIT	POWDER (per 100 g)	STANDARD (per 100 mL)
ENERGY	kcal	475	67.6
PROTEIN EQUIV.	g	14.5	2.1
FAT	g	23	3.2
LINEOLIC ACID	mg	4000	568
LINEOLIC ACID	mg	400	57
ARA	mg	102	14.5
DHA	mg	38	5.4
CARBOHYDRATE	g	51	7.2
L-CARNITINE	mg	11.0	1.57
TAURINE	mg	27.7	3.94
WATER	g	—	89
VITAMIN A	IU	1300	186
VITAMIN D3	IU	285	41
VITAMIN E	IU	10	1.4
VITAMIN K1	mcg	60	8.8
VITAMIN C	mg	43	6.1
FOLIC ACID (folic acid)	mcg	140	19.9
THIAMIN	mg	1000	142
RIBOFLAVIN	mg	500	71
VITAMIN B6	mg	400	56.9
VITAMIN B12	mcg	2.0	0.27
NIACIN	mg	12.3	1.8
PANTOTHENIC ACID	mg	2.00	0.28
BIOTIN	mcg	20	2.8
INOSITOL	mg	24	3.4
CHOLINE	mg	71	10.1
SODIUM	mg	215	30.4
POTASSIUM	mg	715	101
CHLORIDE	mg	285	40.6
CALCIUM	mg	550	78.4
PHOSPHORUS	mg	400	56.9
MAGNESIUM	mg	40	5.7
IRON	mg	8.4	1.2
ZINC	mg	5.5	0.78
MANGANESE	mcg	400	57
COPPER	mcg	599	84
IODINE	mcg	42	6.0
SELENIUM	mcg	12.8	1.8
CHROMIUM	mcg	11	1.6
MOLYBDENUM	mcg	12	1.7

من الولادة وحتى ١٢ شهراً
for 0 to 12 months

سيميلاك إيليكيير
HYPOALLERGENIC
amino acid-based special infant formula

مستحوق • أضيفي الماء
Powder • Add Water
e NET 400g

INGREDIENTS: Com syrup solids, VEGETABLE OILS (high oleic safflower oil, medium chain triglycerides, soy oil) AMINO ACIDS (l-glutamine, l-asparagine, l-leucine, l-tyrosine, l-valine, l-isoleucine, l-arginine, l-phenylalanine, l-tyrosine, l-threonine, l-proline, l-serine, l-alanine, glycine, l-histidine, l-methionine, l-cysteine dihydrochloride, l-tryptophan, l-tyrosine, l-carnitine) MINERALS, Emulsifier: E472, VITAMINS: M. alpina oil, C. cohnii oil, acorbyl palmitate, beta carotene.

ملحوظات التحذير: تحفظ العبوة غير المفتوحة عند درجة حرارة التجميد العادية (لا تتعدى ٢٠°م). بعد فتح العبوة يجب استهلاك المحتويات خلال أربعة أسابيع. نعلق العبوة المفتوحة لتزويد طفلك مكان جاهز وبارد (لا تتعدى ٢٥°م وليس في الثلاجة). بعد إعداده أكثر من وجبة يجب حفظها في الثلاجة عند درجة حرارة (٢°-٤°م) لاستخدام خلال ٢٤ ساعة.

STORAGE: Store unopened tin under normal room conditions (not to exceed 25°C). Once this tin is opened, contents should be used within four weeks. Cover opened tin and store in cool, dry place (not in refrigerator and not to exceed 25°C). If you prepare more than one feeding, it must be refrigerated at (2°-4° C) and used within 24 hours.

3/16" PRINT LIMIT
7/16" GLUE FLAP
12 3/8" VARNISHED AREA
12 13/16"
4 7/8"
5 1/4"
1/8" PRINT LIMIT

ABBOTT INTERNATIONAL LABEL CONTROL		COLORS		SEPARATION INFO		APPROVALS		SIGNATURE		DATE	
FILE NAME: 55251(57)-400-L-44316-01-ELE-U.11		COLORS NOT IN PRINT SEQUENCE		STOCK#: 55251(57) COMM#: 44316-01 FAN#: N/A		PROOFREADER (1)					
CAD DWG. NO: B-DVEO-PK 100987 REV D		1 PROCESS BLACK		FILE PREPARATION BY: CONVERTERS PREPRESS		PROOFREADER (2)					
GENERIC SPEC NO: GL0370		2 PROCESS CYAN		1070 TOWER LANE		PROJECT COORD					
GENERIC SPEC ISSUE DATE: 05/06/2011		3 PROCESS MAGENTA		BENSENVILLE, IL 60106		GRAPHICS COORD					
SOFTWARE/VERSION: ADOBE ILLUSTRATOR CS6		4 PROCESS YELLOW		1 (630) 860-9400		APPROVED					
ART VENDOR: AN LABEL CONTROL		5 PANTONE 3278 C		JOB NUMBER: 3502884-1		NOT APPROVED					
ART RELEASE DATE: 01/06/2015		6 VARNISH		DATE COMPLETED: 01-07-15		ENDORSED PROOF APPROVED BY ADVERTISING					
THIS PRINTOUT IS 100% OF ACTUAL SIZE		7		PRE SEP APRVL: BCC							
		8		FINAL FILE APRVL: MAR							
		9		FINAL FILM APRVL: BCC							
		10		PRNTR: CENVEO							
		11		PREV. COMM#: NEW							
		12									
		13									
		14									
		15									
		16									
		17									
		18									
		19									
		20									
		21									
		22									
		23									
		24									
		25									
		26									
		27									
		28									
		29									
		30									
		31									
		32									
		33									
		34									
		35									
		36									
		37									
		38									
		39									
		40									
		41									
		42									
		43									
		44									
		45									
		46									
		47									
		48									
		49									
		50									
		51									
		52									
		53									
		54									
		55									
		56									
		57									
		58									
		59									
		60									
		61									
		62									
		63									
		64									
		65									
		66									
		67									
		68									
		69									
		70									
		71									
		72									
		73									
		74									
		75									
		76									
		77									
		78									
		79									
		80									
		81									
		82									
		83									
		84									
		85									
		86									
		87									
		88									
		89									
		90									
		91									
		92									
		93									
		94									
		95									
		96									
		97									
		98									
		99									
		100									

LIMITATION OF LIABILITY- DO NOT PRINT, PLATE OR ENGRAVE WITH THIS FILM OR THESE PRINTING PLATES WITHOUT PROPER INSPECTION. All items should be thoroughly inspected by the recipient immediately upon receipt. It is the responsibility of the recipient to examine and proofread all items prior to printing, plating or engraving. Should any material be found to be incorrect or defective, the liability of Converters Prepress, Inc. shall be limited to correcting its own products. CPI will not be liable for any losses or consequential damages, including, but not limited to cost of plates or cylinders, overtime, press delays, missing of insertion dates, paper or ink or lost profits.

12 3/8 VARNISHED AREA

4 7/8

1/8 PRINT LIMIT

1/8 PRINT LIMIT

1/8 PRINT LIMIT

4 3/8

3/16 PRINT LIMIT

7/16 GLUE FLAP

12 13/16

1 1/2

5 1/4

Abbott

Hypoallergenic

EleCare Jr

AGES 1 AND UP

Vanilla

ARTIFICIAL FLAVOR

#1 Brand

Amino Acid-Based Nutrition Powder

For Severe Food Allergies and GI Disorders

NET WT. 14.1 OZ (400 g)

Nutritionally Complete For Oral and Tube Feeding Not for IV Use

Abbott Nutrition
Abbott Laboratories
Columbus, Ohio 43219-3034 USA

USE ONLY AS DIRECTED BY A PHYSICIAN
Directions for Preparation and Use

Your child's health depends on carefully following these directions. Ask your child's doctor if you need to use cooled, boiled water for formula preparation. Depending on the child's specific needs, preparation will vary as prescribed by physician. Follow physician's instructions carefully.

1 Wash your hands, surfaces and utensils
2 Add powder; return dry scoop to can
3 Cap container; shake well

Once feeding begins, use within 1 hour or discard

Storage Once mixed, store container of prepared formula in refrigerator and feed to child within 24 hours. Store unopened or opened can at room temperature; avoid extreme temperatures. Use opened can contents within 1 month.

Warning Never use a microwave to warm formula. Serious burns can result.

MIXING GUIDE: DILUTION OF 30 CAL/FL OZ (SCOOP YIELDS 9.5 GRAMS POWDER)

IMPORTANT: MIXING INSTRUCTIONS VARY BY FLAVOR

Measure water	+	Add scoop(s) of UNPACKED LEVEL POWDER using enclosed scoop	=	Final volume (approx.)
5 fl oz		4 scoops (38 g)		6 fl oz
7.5 fl oz		6 scoops (57 g)		9 fl oz

When mixed as directed, makes approximately 62 fl oz of formula at 30 Cal/fl oz.
Osmolality, prepared at 30 Cal/fl oz = 590 mOsm/kg water

From the makers of **Similac**

EleCare 0-12 Months
EleCare Jr Ages 1 and up

Questions or comments?
Call 1-800-515-7677, 8:30 am-5:00 pm, Eastern time, weekdays.
Call 1-800-FORMULA to order EleCare Jr.
For more information visit www.EleCare.com

For product related queries, contact Customer Care Officer at Madhav by address or call 1800 265 0488 (Toll free) or email webmaster@madhav.com

Food for Special Medical Purposes
This is a special medical food. It is not a substitute for a balanced diet. It is intended for use under medical supervision. It is not for general use. It is not a substitute for a balanced diet. It is intended for use under medical supervision. It is not for general use.

Abbott Nutrition
Abbott Laboratories
Columbus, Ohio 43219-3034 USA

56585-14.1-LC-C3495-ELJ-VN-a

TURN OVERPRINT PREVIEW ON TO DISPLAY CORRECTLY

PROOF: ☒ EPSON ☐ APPROVED* ☐ KODAK ☐ DISAPPROVED

PRINTER: WESTROCK - TOLEDO

CAD: PK100987 REV D
PREV. COMMODITY: 41765

GS: GL0370
*Generic Specification

SIGNATURE

Approved proof is accurate for copy, size, upc, and process builds. Match spot color(s) to approved ink drawdown(s) if applicable.

PROCESS YELLOW
PROCESS BLACK
PMS 288 C BLUE
PMS 716 C ORANGE

PMS 157 C ORANGE
VARNISH

100mm LINE 12 13/16" 12 3/8" VARNISHED AREA 4 7/8" FRONT AREA COPY 1/8 PRINT LIMIT 1/8 PRINT LIMIT 4 3/32" 1/8 4 1 1/32" 3/16" PRINT LIMIT 7/16" GLUE FLAP 1 1/2" UPC 5 1/4"

NUTRITION INFORMATION

NUTRIENT	UNITS	Per 100 g powder	Per 100 ml standard dilution*
Energy	kcal/dl	525/2196	67.6/283
Fat	g	29.08	3.75
of which saturates	g	11.9	1.53
of which linoleic acid	mg	4199	541
of which linolenic acid	mg	446	57
of which arachidonic acid (ARA)	mg	103	13
of which docosahexaenoic acid (DHA)	mg	51	7
Carbohydrate	g	51.4	6.62
of which sugars	g	11.7	1.50
Fibre	g	0	0
Protein	g	14.44	1.86
Salt	g	0.58	0.075
Vitamin A	mcg RE	473	61
Vitamin D3	mcg	7.87	1.01
Vitamin E	mg α-TE	7.1	0.9
Vitamin K1	mg	42.0	5.4
Vitamin C	mg	65.6	8.5
Folic Acid	mcg	79	10
Thiamin (Vitamin B1)	mcg	394	51
Riboflavin (Vitamin B2)	mcg	525	68
Vitamin B6	mcg	315	41
Vitamin B12	mcg	1.57	0.20
Niacin	mg	5.51	0.71
Pantothenic Acid	mg	3.94	0.51
Biotin	mcg	23.6	3.0
Sodium	mg (mmol)	231 (10.0)	30 (1.30)
Potassium	mg (mmol)	551 (14.1)	71 (1.82)
Chloride	mg (mmol)	420 (11.8)	54 (1.52)
Calcium	mg (mmol)	551 (13.8)	71 (1.78)
Phosphorus/phosphate	mg (mmol)	341 (10.9)	44 (1.41)
Magnesium	mg (mmol)	39.4 (1.64)	5.1 (0.21)
Iron	mg	9.45	1.22
Zinc	mg	3.94	0.51
Manganese	mcg	42	5
Copper	mcg	394	51
Iodine	mcg	79	10
Selenium	mcg	10.5	1.35
Choline	mg	78.7	10.1
Taurine	mg	31.5	4.1
L-carnitine	mg	7.9	1.0
Inositol	mg	26.3	3.4

Osmolality: 245 mOsm/l

* Standard dilution is one level scoop (levelled in tin) of powder for each 30 ml (1 fl oz) of water, or 128 g powder diluted to 1 litre in water.

IMPORTANT NOTICE

FOOD FOR SPECIAL MEDICAL PURPOSES for use under medical supervision. Similac Alimentum is a nutritionally complete, extensively hydrolysed infant formula for special medical purposes. It is intended for the dietary management of infants and children with cow's milk protein allergy and other conditions where an extensively hydrolysed formula is indicated. Suitable as a sole or supplemental source of nutrition. FOR ENTERAL USE ONLY. Breast milk is best for infants and, where possible, is recommended for as long as possible during infancy. For your baby's health, we advise you to carefully follow the instructions below. Whilst they are made under hygienic conditions, powdered infant formulas are not sterile and proper hygiene, preparation, use and storage are important.

PREPARATION GUIDE

- Thoroughly wash and rinse all equipment to be used in preparing the feed. Sterilise all utensils according to manufacturers' instructions or boil for 10 minutes.
- Boil fresh tap water (not bottled water) and allow to cool for no more than 30 minutes. Do not use artificially softened water or repeatedly boiled water.
- Wash your hands and clean the surface you are going to use.
- Pour the correct amount of warm, previously boiled water into the sterilised feeding bottle.
- Fill the scoop with Similac Alimentum powder, levelling with the back of a clean, dry knife. Do not pack down in scoop.
- Add one scoop of Similac Alimentum to each 30 ml of water.
- Only use the scoop provided.
- Place lid on bottle and shake gently until completely dissolved.
- Fit a sterilised teat on bottle and test the temperature (drops of formula should feel lukewarm on the inside of your wrist). If necessary, add cap and cool by holding under cold running water. Feed your baby.
- Discard formula that has not been used within 1 hour.
- We recommend preparing each feed as required. If you prepare more than one feed, it must be refrigerated at 2-4°C (35-40°F) and used within 24 hours.

ADDITIONAL INFORMATION

Prepared formula may also be fed from a cup, and for older children can be mixed with cereal or other solid foods, as recommended by your healthcare professional. Never leave your baby alone at feeding times. Never use a microwave to prepare or warm formula. Serious burns can result. Good dental hygiene is important for babies and toddlers, consult your health professional for advice. Do not use a feeding bottle as a comforter and move baby to a trainer cup from 6 months if possible. STORAGE: Store unopened under normal room conditions. Once opened, use plastic lid to keep tightly covered and store in a cool, dry place (not refrigerator). Use within 3 weeks of opening. BEST BEFORE END: SEE BASE OF TIN

FEEDING GUIDE

This table is for guidance only. Individual babies may require more or less than the amounts shown. If you require advice, consult your healthcare professional. Infants over 6 months of age should receive supplemental foods in addition to Similac Alimentum, as directed by your healthcare professional. Remember to feed your baby on demand, unless your healthcare professional advises you otherwise.

Approximate age of baby	To prepare one feed	
	Amount of warm, previously boiled water	Number of level scoops Similac Alimentum
Birth - 2 weeks	60 ml (2 fl oz approx.)	2
2 weeks - 2 months	120	4
2-6 months	180	6
6 months and over	210	7

1 level scoop = 4.2 g

Ingredients:

Maltodextrin, vegetable oils (high oleic safflower oil, MCT oil from palm kernel oil and coconut oil in varying proportions, soy oil), casein hydrolysate powder (milk protein), sucrose, emulsifier: E1450 (modified corn starch), calcium citrate, potassium citrate, calcium phosphate tribasic, thickener: E415 (xanthan gum), L-tyrosine, arachidonic acid (AA) from M. alpina oil, magnesium chloride, sodium chloride, L-cysteine, ascorbic acid, potassium phosphate, docosahexaenoic acid (DHA) from C. cohnii oil, L-tryptophan, choline chloride, ferrous sulphate, taurine, potassium chloride, m-inositol, antioxidants: E304, E306, zinc sulphate, dl-alpha-tocopheryl acetate, L-carnitine, niacinamide, calcium pantothenate, copper sulphate, vit. A palmitate, riboflavin (vit. B2), thiamin (vit. B1), pyridoxine hydrochloride (vit. B6), potassium iodide, folic acid, vit. K1, biotin, sodium selenite, vit. D3, vit. B12.

Abbott Nutrition
Abbott Laboratories Ltd.,
Maldenhead,
Berks. SL6 4BE.
www.abbottnutrition.co.uk

Abbott Laboratories (Ireland) Ltd,
Clayton Business Campus,
Dublin 24

Made in USA

57058(53)

44113-01

An FSSAI initiative
This is neither an infant milk substitute nor an infant food.
Manufactured by and Country of Origin: Abbott Laboratories, 901 North Centerville Road, Shrewsbury, MA 01545, USA
Imported and Marketed by: Abbott Healthcare Pvt. Ltd., Regd. Office, 4, Corporate Park, Sion - Trombay Road, Mumbai - 400 071
Lic. No. 100120220000149

For product related queries, contact Customer Care Officer at Marketed by address or call 1800 266 0448 (toll free) or email: webmaster@abbottnutrition.com
For Severe Allergy Due To Insect Milk Protein And Soy Protein FOOD FOR SPECIAL MEDICAL PURPOSES
(To be taken under medical advice)
Mfg. Date: XX/XX/XXXX
Exp. Date: XX/XX/XXXX
Batch No.: XXXXXXXX
MPP #: XXXXX- (Inclusive of all taxes)
Lot No. XXXX
Commodity No. XXXXXXXXX

Similac Alimentum

HYPOALLERGENIC INFANT FORMULA

Powder • Add Water
400 g e

Extensively hydrolysed food for special medical purposes
Contains LCPs (AA and DHA)

Abbott

From birth onwards

Ensuring visual excellence.

Workflow: XXXXXX

Stevenson Color, Inc. | 535 Wilmer Avenue Cincinnati, Ohio 45226 | Telephone: 513.321.7500 Fax: 513.321.7502 | stevensoncolor.com

Prepress/Assembly

Job Description: Alimentum 400g #44113	
Job Number: 14.0369	Customer: Abbott Nutrition (ANI)
File Name: A0369E44113	Vendor: XXXXXX
Final Artwork Size: 12.8125" x 4.34375"	Printer: WS Packaging - Franklin
Operator: MO	Last Modified: 2/7/14 12:10 PM

Our Stevenson Quality Assurance Team has thoroughly reviewed this file. Upon receipt, please check this file carefully. Our client and its suppliers are responsible for all content, color, legal and regulatory text and product information. Stevenson will, at our cost, replace our product if the work is found to be incorrect at this stage. Should an error be found subsequent to client/supplier approval, Stevenson shall be responsible only for the replacement of the artwork containing the error, and in addition, shall not be held liable for any consequential changes, charges or losses incurred as a result of any error.

Color calibration bars and registration marks.